

# Development Services

Highlights and Significant Issues Report  
For the Month of October 2011

---

## Executive Summary

### ***Customer Contact and Business Improvement.***

October has been a busy month with approximately 230 customers visiting the Development Services Business Centre. Of this total, 84 represented enquiries, 87 represented application lodgements and the remainder facilitating meetings and deliveries. We received 88 Duty Planner enquiries and continue to struggle to achieve 85% of enquiries being responded to within expected turnaround time of 10 days. We have been working on a customer engagement strategy that will improve our service, modes of access to information and provide a comprehensive town planning advisory service. We continue to engage and seek advice regarding best practice customer service with our whole of Council – Call Centre and Customer Service teams.

We presented the outcome of our business improvement status assessments & priority ratings to Council on the 12<sup>th</sup> October and as such some initiatives have been put on hold pending legislation and major system upgrades. Progress of milestones and deliverables of ongoing initiatives will be reported on in the body of this report.

### ***Development Assessment***

The number of applications received has steadied this month. The mix of application types is on the less complex side comprising 34% Building Site Variations and 28% Planning Applications. Reconfiguration reporting has been introduced this month as it previously fell under the general overall performance mechanism. This separate reporting will give Council a more detailed assessment of performance in regard to these applications.

Performance to date is within IDAS timeframes. In the case of reconfiguration approvals the lodgement to decision period was outside the benchmark. Only 2 reconfiguration applications were decided in October which were dealt with in less than 40 days in the decision making period. These applications took a long time for DERM/DTMR referral (6 months) to be concluded and, in terms of one application, an additional six (6) months to answer the Information Request. Negotiated Decision Notices are taking a longer time to finalise at present as the issue of Adopted Infrastructure Charges regime in areas outside of the PIA, amongst others, is still being considered by Council.

### ***Development Engineering***

For the month of September we received 15 Operational Works applications – compared to the previous 3 month average of 17 and historic average of 12 (refer to Section 2.1.2). The Operational Works assessment target, of 85% within 40 days of application, was met with 100% assessed within the target time frame. Nineteen Plan Sealing applications were received in the month compared to the previous 3 month average of 7 and historic average of 15 (refer to Section 2.1.2). The plan sealing target, of 85% within 15 days of application, was met. The minor works application processing target, of 85% within 10 days of application, was met.

### ***Health and Regulatory Services***

Food business licences issued for 17 new premises within the new Canelands Shopping Centre development as well as liaising with new operators and inspecting premises.

Local laws Officers responded to increasing numbers of animal control issues, particularly barking dogs complaints.

Council's draft Pest Management Plan advertised for public comment prior to submission to DEEDI for approval

### ***Strategic Planning***

Development of the planning scheme is progressing and various components of the draft planning scheme are now being incorporated into a working version of the new draft planning scheme. Development of new overlays also commenced in October.

## Table of Contents

<b>Name of Section</b>	<b>Section</b>	<b>Page</b>
<b>INDUSTRY CONSULTATION AND PUBLIC CONTACT</b>	<b>1</b>	<b>1-3</b>
PD Online	1.1	1
Industry Contact/Meetings	1.2.1	1
Working Groups	1.2.3	1
Planning Scheme Consultation	1.2.2	1
Duty Planner	1.3	3
Development Services Business Centre Contact	1.4	4
<b>ALL IPA/SPA APPLICATIONS RECEIVED</b>	<b>2</b>	<b>5-21</b>
Applications – MCU- Code	2.2	9-10
Applications – MCU – Impact	2.3	11-12
Applications – Negotiated Decision Notice	2.4	13
Applications – Reconfiguration of Lot	2.5	14-15
Concurrence Agency Applications	2.6	16
Operational Works	2.7	17-18
Plan Sealing	2.8	19-20
Minor Works Applications	2.9	21
Planning Certificates	2.10	22
<b>ePlanning</b>	<b>3</b>	<b>23</b>
<b>CUSTOMER REQUESTS</b>	<b>4</b>	<b>24-34</b>
Local Laws	4.2	26
Compliance	4.3	27-30
Environmental Health	4.4	31-32
Environmental Services	4.5	33
Pest Management	4.6	34
<b>INFRINGEMENTS</b>	<b>5</b>	<b>35-36</b>
Regulated Parking	5.2	36
Local Laws	5.3	36
Compliance	5.4	36
<b>DOMESTIC BUILDING WORKS</b>	<b>6</b>	<b>37-38</b>
<b>BUSINESS IMPROVEMENT</b>	<b>7</b>	<b>39-40</b>
<b>200K PLANNING SCHEME</b>	<b>8</b>	<b>41-45</b>

## 1. INDUSTRY CONSULTATION AND PUBLIC CONTACT

### 1.1 Views of PD Online Web Page

Description	Current Month	Average Hits - Previous 3 Months	Monthly Average Since January 2011
Page Views	697	605	616

### 1.2.1 Industry Contact/Meetings

Description	Current Month
Pre-Lodgement Meetings	13
Engineering Meetings	36
Environmental Services	1
Compliance	0
Local Laws	0
Environmental Health	3
Developer Meetings	27

### 1.2.3 Work Groups

- Various Mackay's Growth Management Update eNewsletters distributed.
- Monthly eNewsletter on Mackay Region 200k Planning Scheme distributed
- Meeting held with DLGP on planning scheme development
- Sustainability Promotions working group meeting

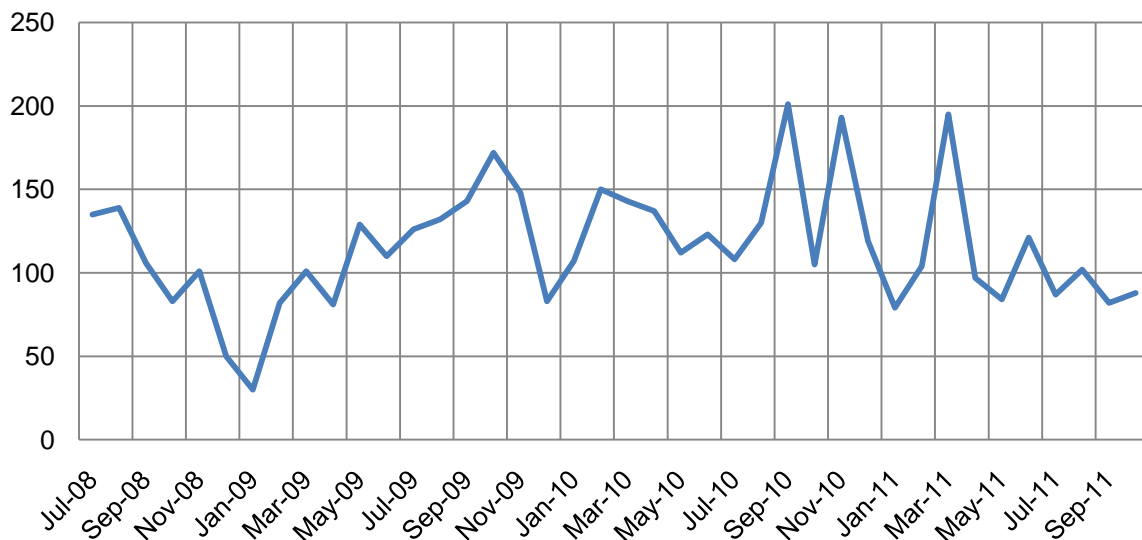
### 1.2.2 Planning Scheme Consultation

- Mackay Region 200 K Planning Scheme eNewsletter #4 distributed.
- The Ooralea urban design principles report released to the public.
- Grapevine article published on Strategic Planning projects.
- Northern Beaches Smart Growth Plan consultation promoted on radio. Consultation closed on 28 October 2011.
- Monthly workshop with DLGP on the preparation of the Planning Scheme held on 18 October. A meeting was also held with DEEDI on the proposed planning scheme response to managing timber plantations in the region.
- A Council briefing was held on overlays being developed as part of the new Planning Scheme.
- Meeting held with representatives of the Queensland Reconstruction Authority on the Planning for stronger, more resilient floodplains project.

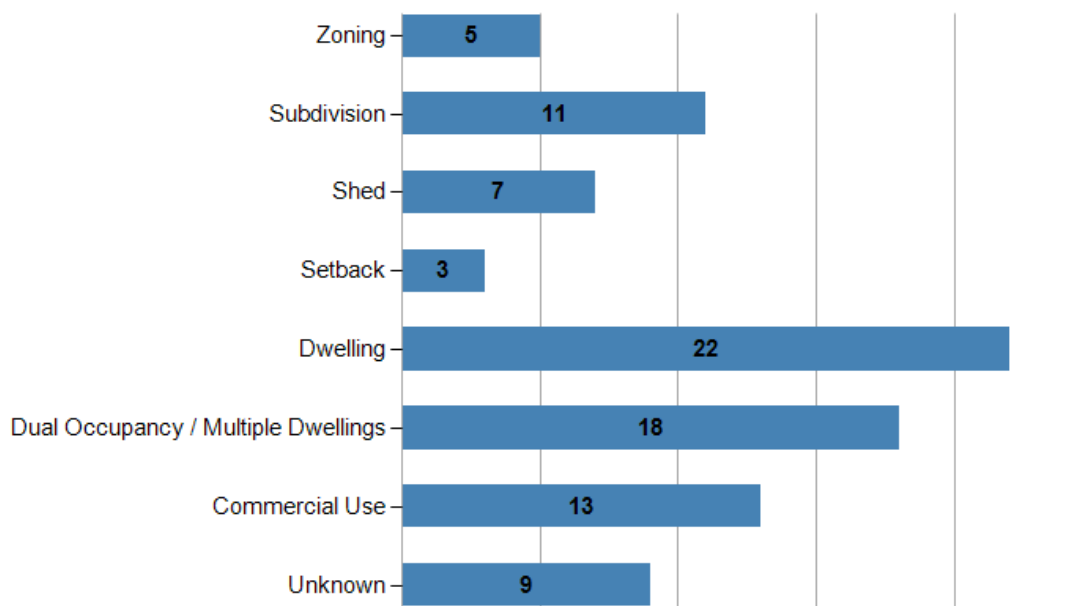
### 1.3 Duty Planner

Description	Current Month	Previous 3 Months Average	Average Since July 2008
Responses to Email & Fax Requests	88	103	115

#### 1.3.2 Duty Planner Responses Provided Since July 2008



#### 1.3.3 Number of Duty Planner Responses by Type

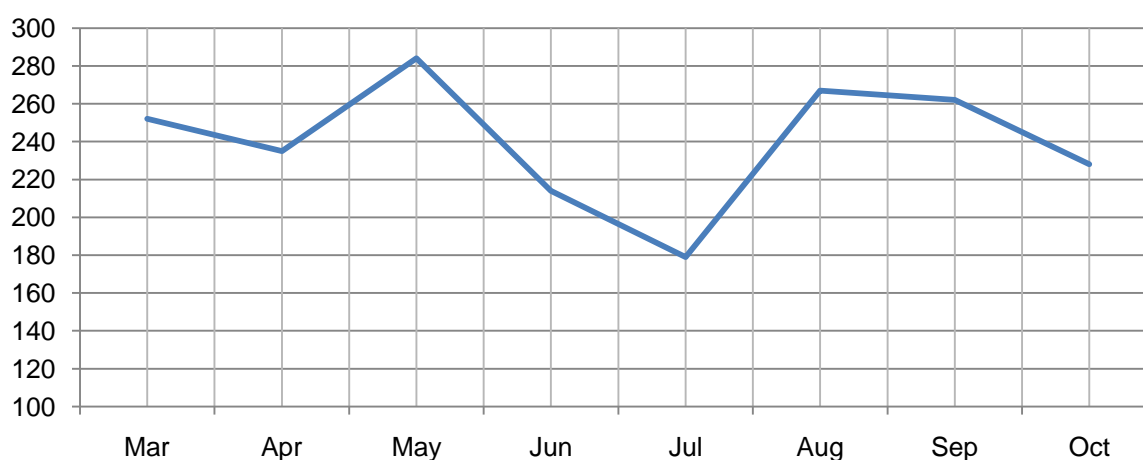


**1.4.1 Development Services Business Centre Customer Contact**

Description	Current Month	Previous 3 Months Average	Average Since March 2011
<b>Enquiries</b>	84	78	84
<b>Meeting</b>	50	56	63
<b>Deliveries</b>	7	11	11
<b>Application Lodgements</b>	87	88	79
<b>TOTAL</b>	228	233	238

**1.4.2 Application Lodgement by Business Type**

Description	Current Month	Previous 3 Months Average	Average Since March 2011
<b>Development Engineering</b>	15	8	8
<b>Development Assessment</b>	23	21	23
<b>Water &amp; Waste</b>	47	63	48
<b>Health &amp; Regulatory Services</b>	2	4	3
<b>TOTALS</b>	87	96	82

**1.4.3 Number of Enquiries Received**


## 2. ALL SPA/IPA APPLICATIONS RECEIVED

### 2.1.1 Assessment of All Applications

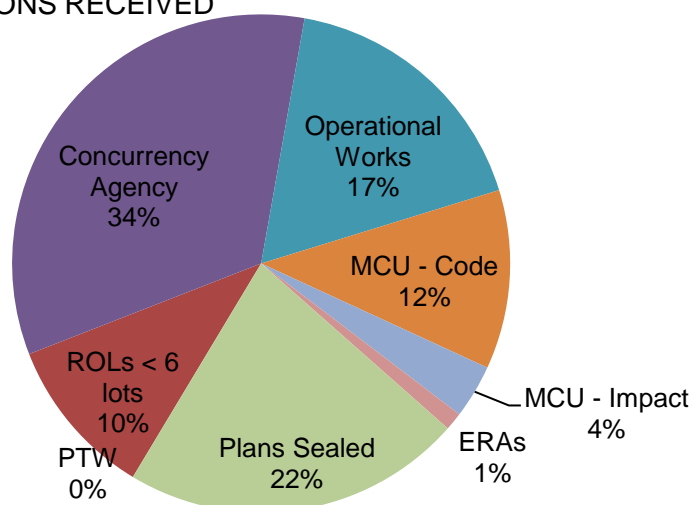
■ Active Requests (Beginning of Month) ■ Requests Received ■ Requests Decided



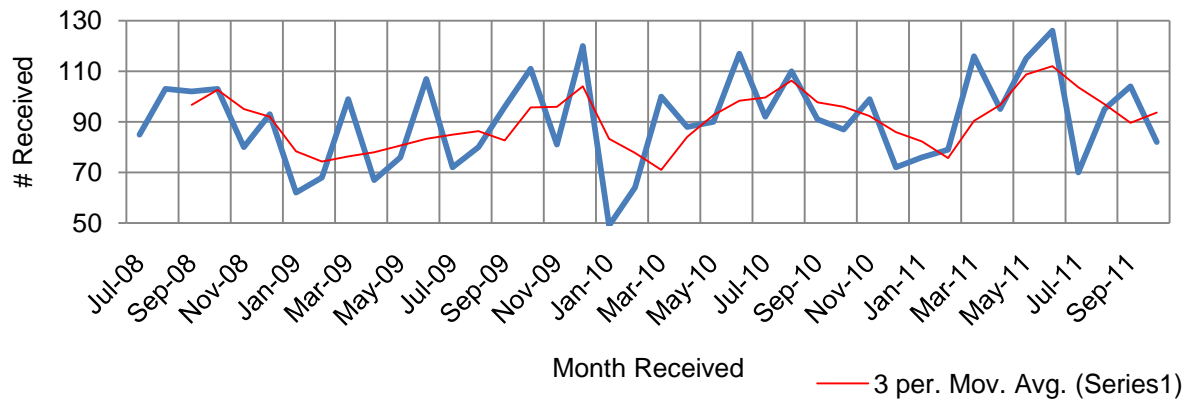
### 2.1.2 Applications Received

Application Type	New Application Received	Amendments Received	Total All Received	Previous 3 Months Average	Average Since July 2008
ROs > 6 lots	0	0	0	1	1
ROs < 6 lots	8	1	9	4	9
Combined Applications	0	0	0	4	4
Concurrency Agency	29	0	29	28	14
Operational Works	14	1	15	17	12
MCU - Code	7	3	10	22	24
MCU - Impact	3	0	3	3	5
ERAs	1	0	1	1	2
Plan Sealing	19	0	19	7	15
PTW	0	0	0	0	0
	<b>81</b>	<b>5</b>	<b>86</b>	<b>87</b>	<b>86</b>

### 2.1.3 IPA/SPA APPLICATIONS RECEIVED



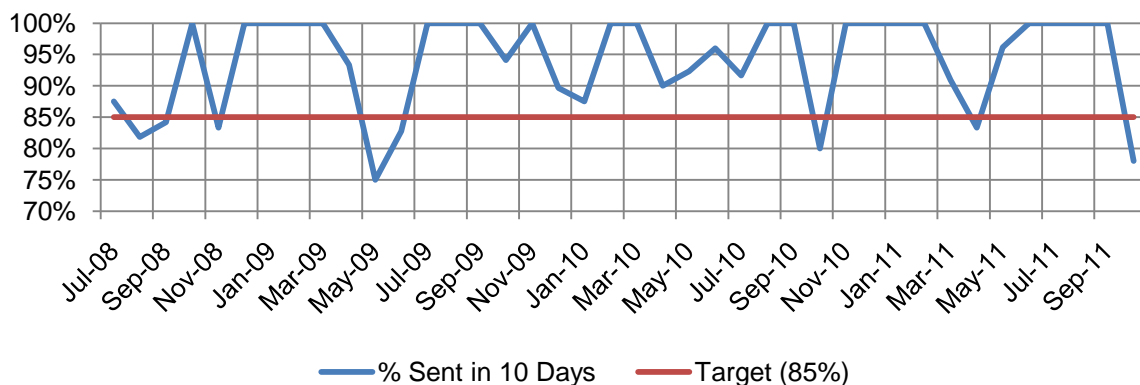
### 2.1.4 Applications Received Since July 2008



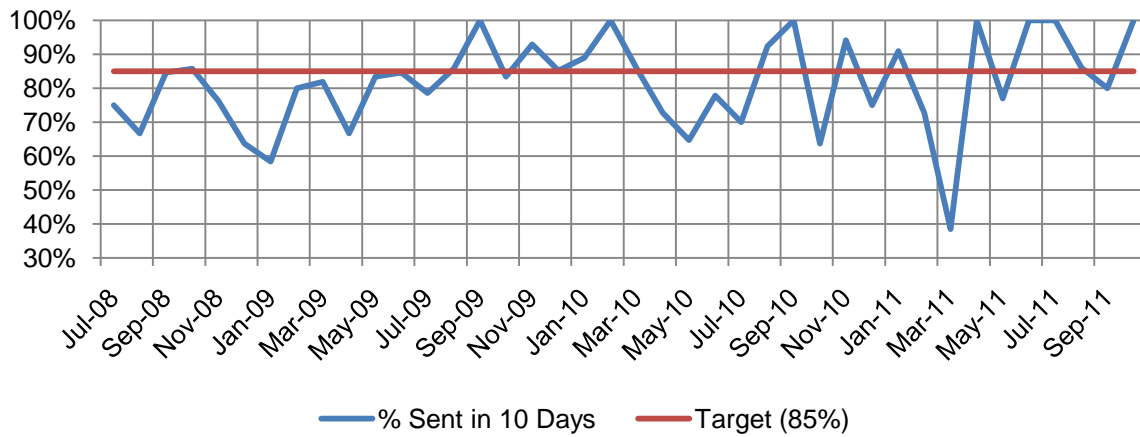
### 2.1.5 Acknowledgement Notice & Information Request

Description	Current Month	Previous 3 Months Average	Average Since July 2008	Target
Number of Acknowledgement Notices Sent	5	14	16	
Average Days to Send Acknowledgement Notice	5	8	6	85 % in 10 Days
Number of Information Requests Sent	1	7	15	
Average Days to Send Information Requests	10	8	6	85 % in 10 Days

### 2.1.6 % of Acknowledgement Notices Sent Within 10 Days (KPI-85% in 10 Days)



### 2.1.7 % of Information Requests Sent Within 10 Days (KPI-85% in 10 Days)



### 2.1.8 Appeals

Description	Current Month	Previous 3 Months Average	Average Since July 2008
Notices of Appeal Received	1	2	2

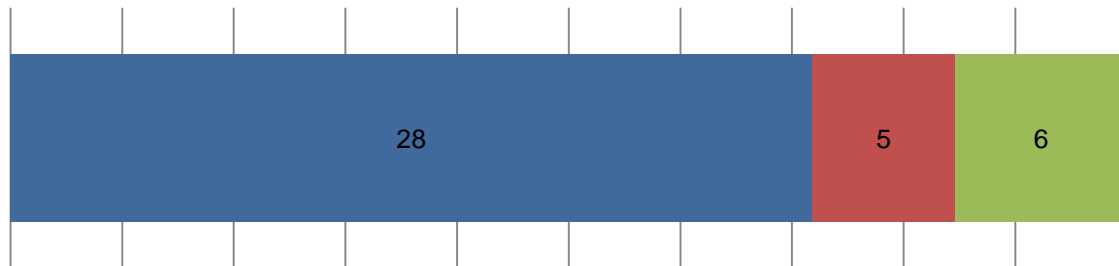
*Bunnings Group Limited v Mackay Regional Council* – Appeal 4027 of 2011 (DA-2009-469)

Applicant appeal against Council's conditional approval of a development application seeking a development permit for Material Change of Use of Premises (Hardware Store) and Reconfiguration of a Lot (1 Rural Lot into 2 Lots).

Subject Site - Lot 2 on SP141692, Holts Road, Richmond

### 2.1.9 Assessment of Amended Applications

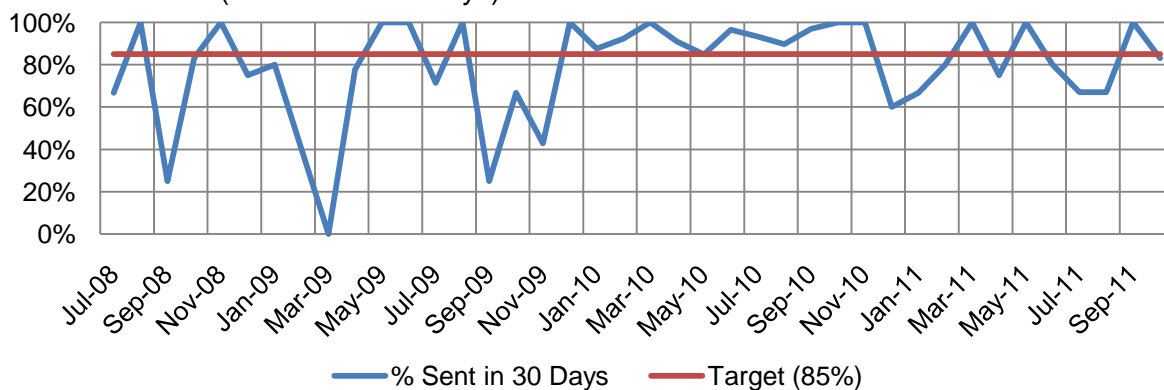
■ Active Requests (Beginning of Month) ■ Requests Received ■ Requests Decided



### 2.1.10 Change of Approval, Change of Conditions & Extension of Currency Period

Description	Current Month	Previous 3 Months Average	Average Since July 2008	Target
Requests Received	5	13	8	
Requests Decided	6	7	9	
Days to Decide	33	20	22	85% in 30 Days

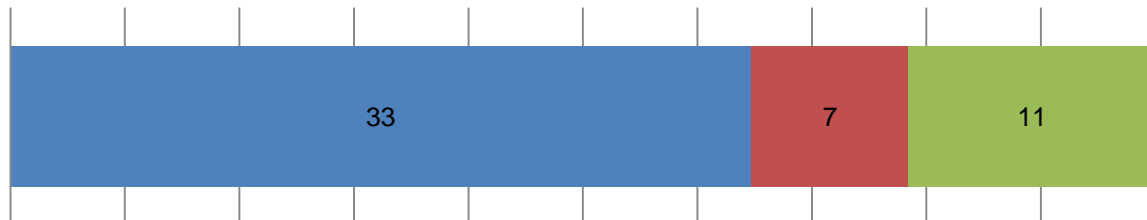
### 2.1.11 % of Amended Applications Decided in 30 Days (KPI-85% in 30 Days)



## 2.2 APPLICATIONS – MCU – CODE

### 2.2.1 Assessment of MCU-Code Applications

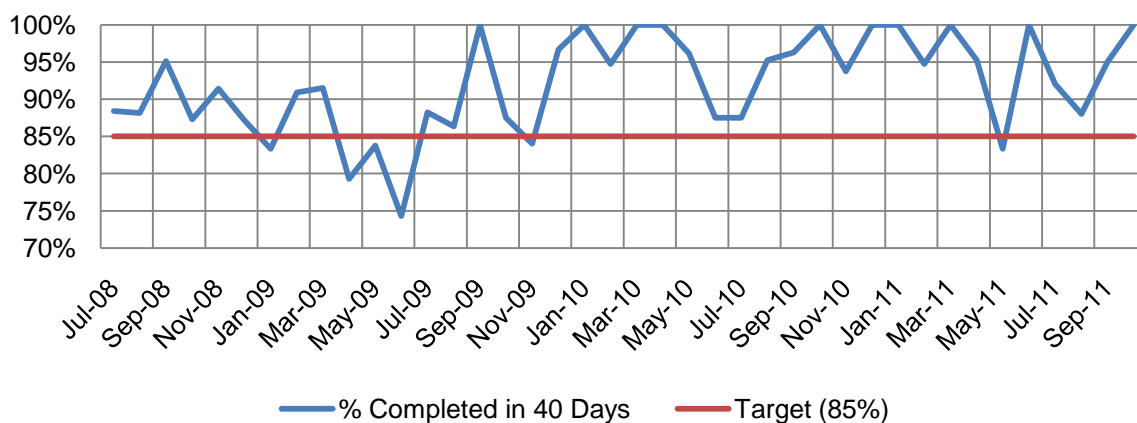
■ Active Requests (Beginning of Month) ■ Requests Received ■ Requests Decided



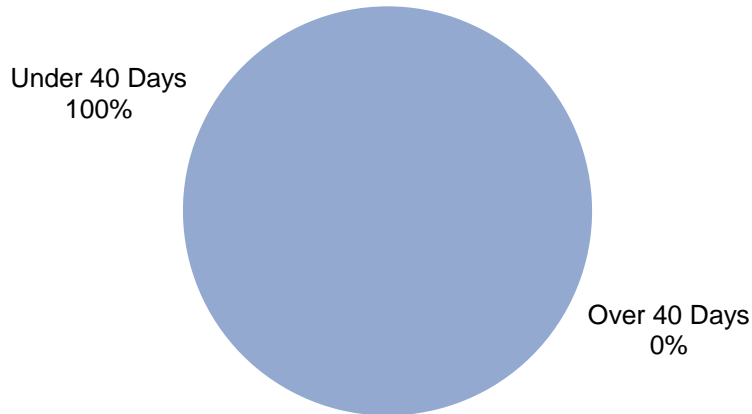
### 2.2.2

Description	Current Month	Previous 3 Months Average	Average Since July 2008	Target
New Applications Received	7	19	21	
Applications in Decision Making Period	12	18	29	
Average Days in Decision Making Period	13	33	31	85% in 40 Days
Number of Applications Decided	11	21	26	
Average Days to Decide	30	68	57	85% in 80 Days

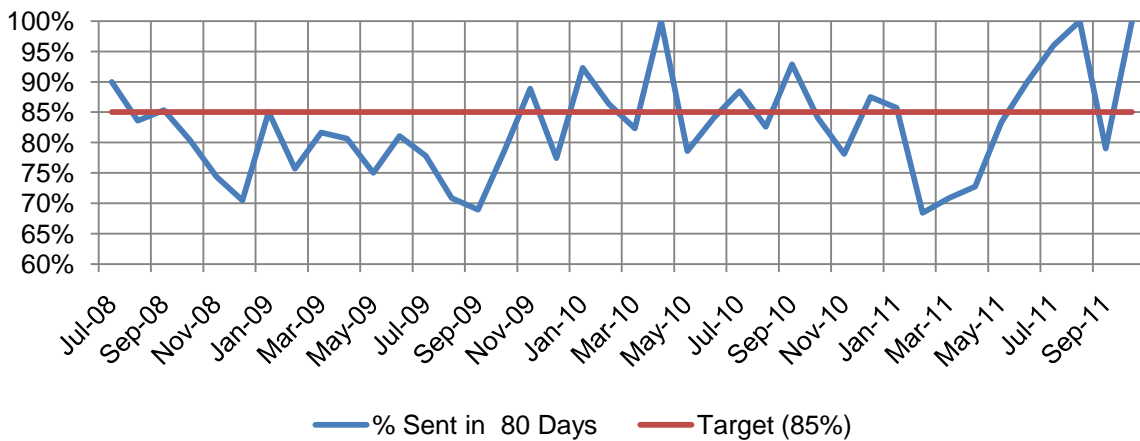
### 2.2.3 % Days in Decision Making Period under 40 Days (KPI-85% in 40 Days)



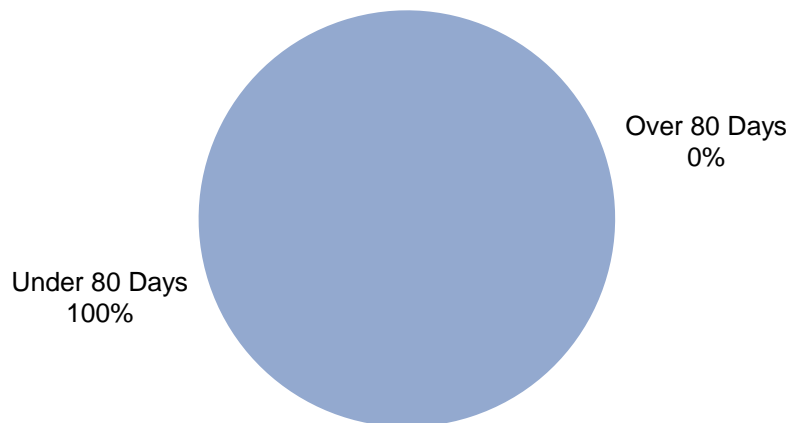
**2.2.4 Decision Making Period Completed Under 40 Days**



**2.2.5 % Days to Process an Application - under 80 Days (KPI-85% in 80 Days)**



**2.2.6 Application Decided under 80 Days**



## 2.3 APPLICATIONS – MCU – IMPACT

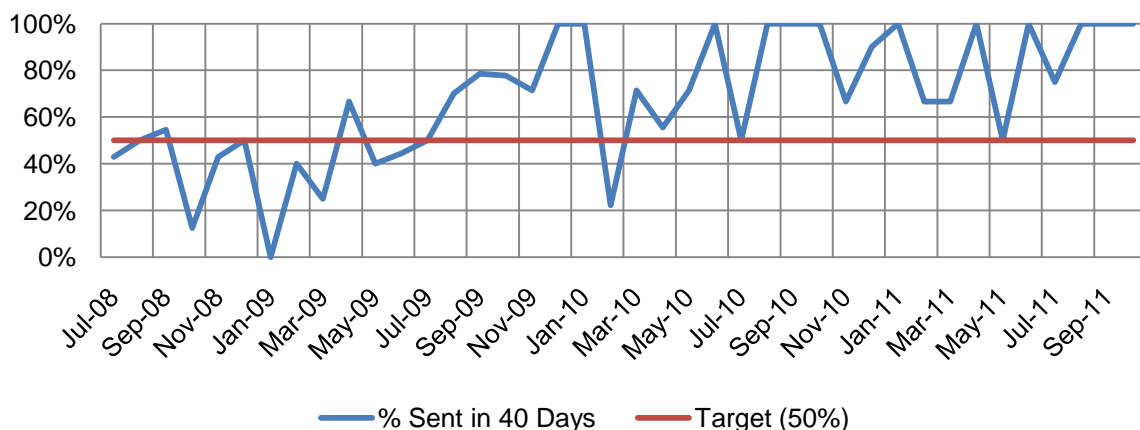
### 2.3.1 Assessment of MCU-Impact Applications



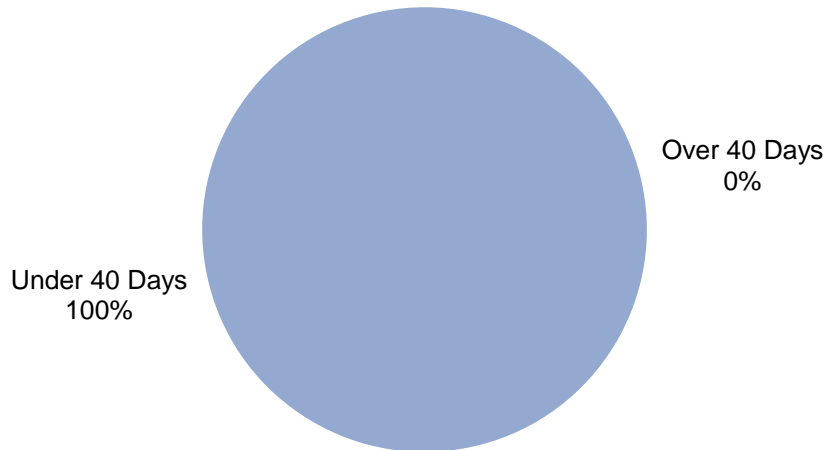
### 2.3.2

Description	Current Month	Previous 3 Months Average	Average Since July 2008	Target
New Applications Received	3	2	5	
Applications in Decision Making Period	8	6	20	
Number of Applications Decided	1	3	6	
Average Days in Decision Making Period	35	28	32	50% in 40 Days
Average Days to Decide	78	124	162	85% in 230 Days

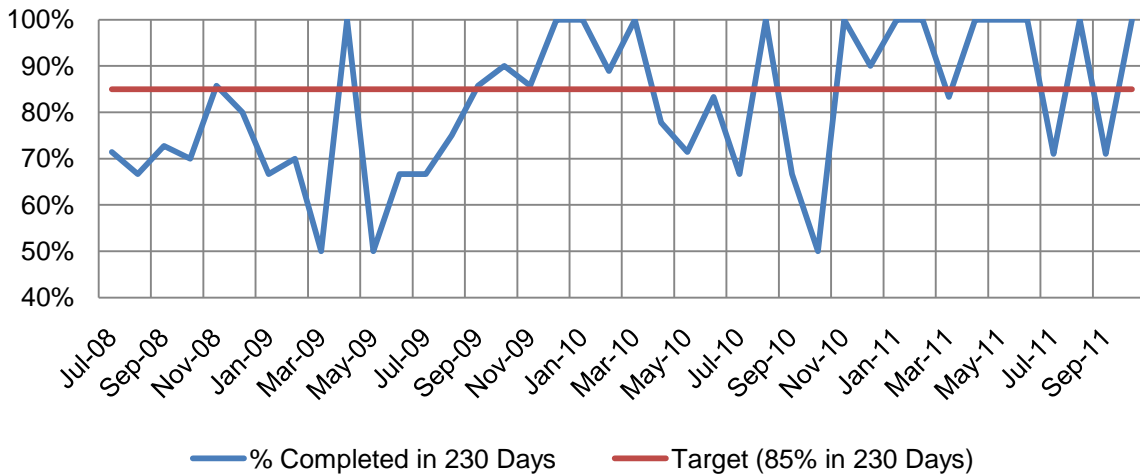
### 2.3.3 % Days in Decision Making Period under 40 Days 50% (KPI-50% in 40 Days)



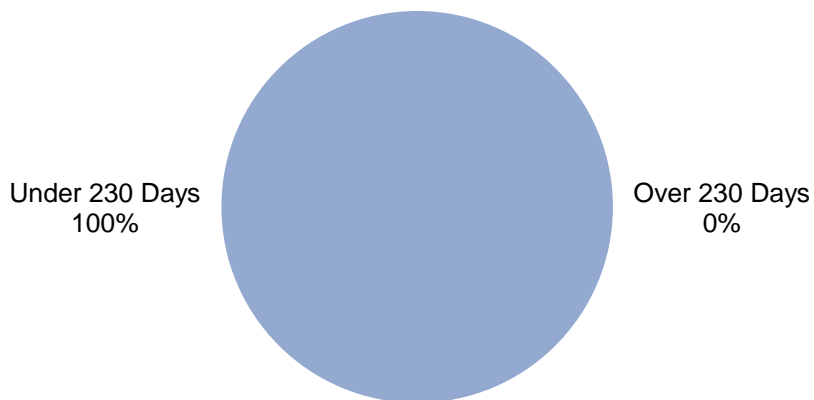
**2.3.4 Decision Making Period Completed Under 40 Days (KPI)**



**2.3.5 % Days to Decide an Application - under 230 Days (KPI-85% in 230 Days)**



**2.3.6 Applications Decided - Under 230 Days (KPI)**

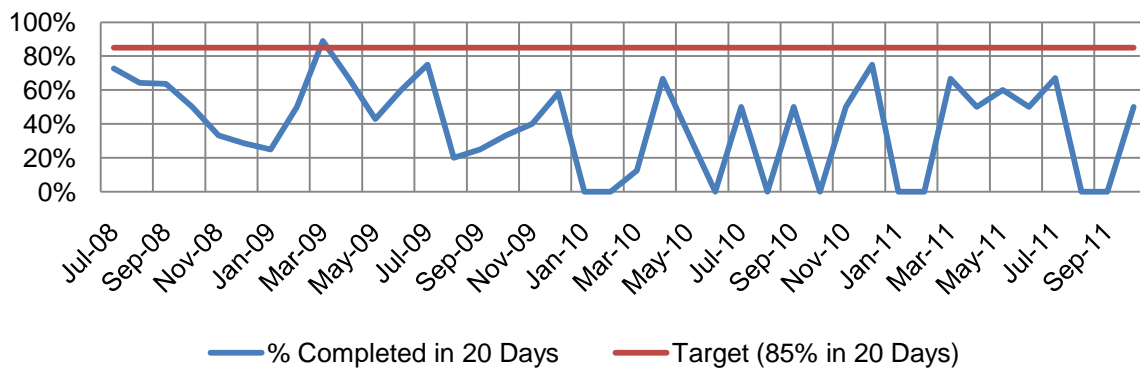


## 2.4 APPLICATIONS – Negotiated Decision Notices

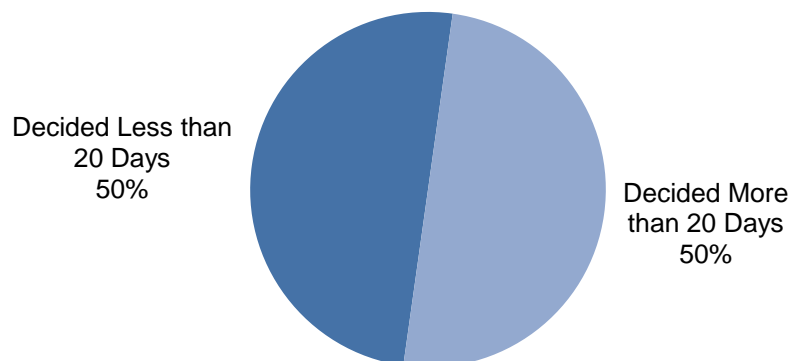
### 2.4.1

Description	Current Month	Previous 3 Months Average	Average Since July 2008	Target
Applications Received	8	2	6	No More than 20 %
Applications Decided	2	3	6	
Average Days to Decide Application	17	21	26	85% in 20 Days

### 2.4.2 % Days in Decision Making Period under 20 Days 85% (KPI-85% in 20 Days)



### 2.4.3 Negotiated Decision Notice Decided Less than 20 Days (KPI)

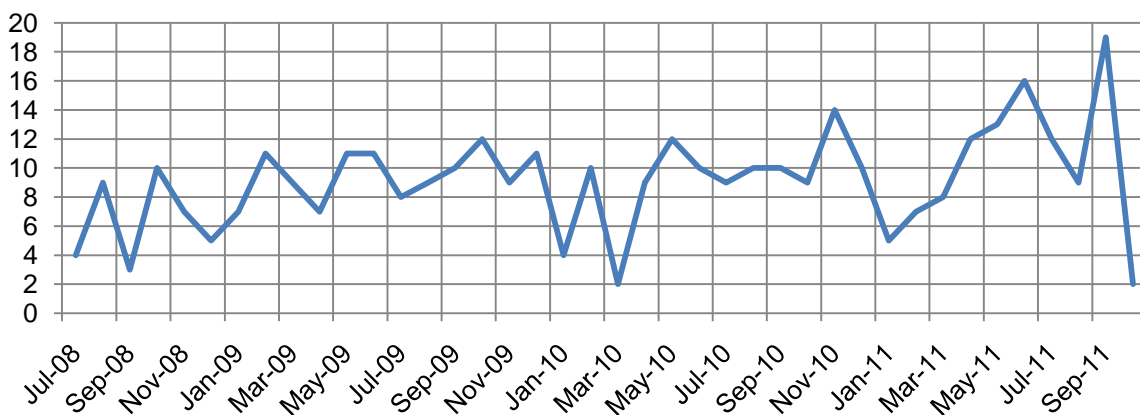




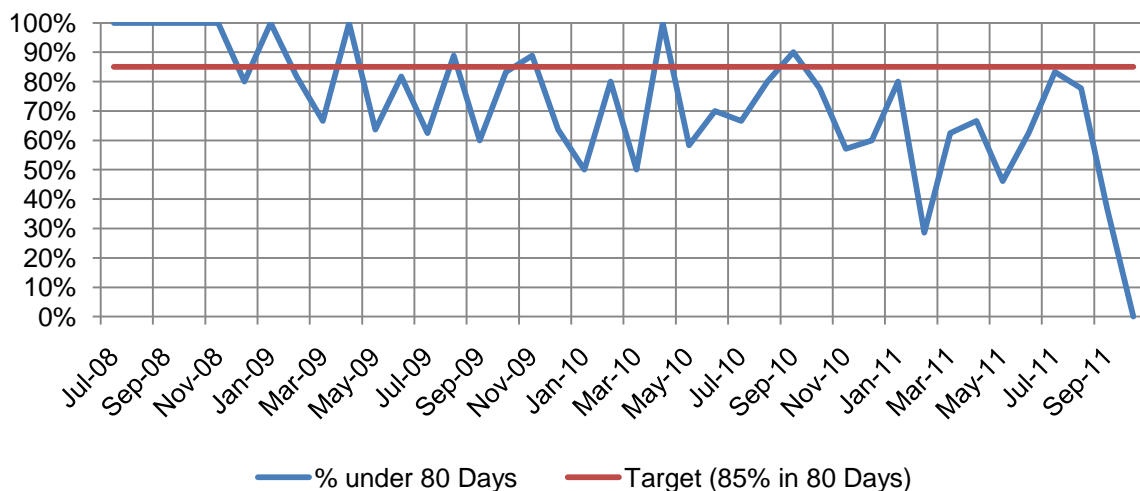
### 2.5.1 APPLICATIONS - Reconfiguration of Lot Applications

Description	Current Month	Previous 3 Months Average	Average Since July 2008	Target
New Applications Received	8	4	10	
Number of Applications Decided	2	13	9	
Average Days from Lodgement to Decision	150	94	68	85% in 80 Days
Average Days in Decision Making Period	33	21	23	85% in 40 Days
Number of Lots Approved	18	105	65	

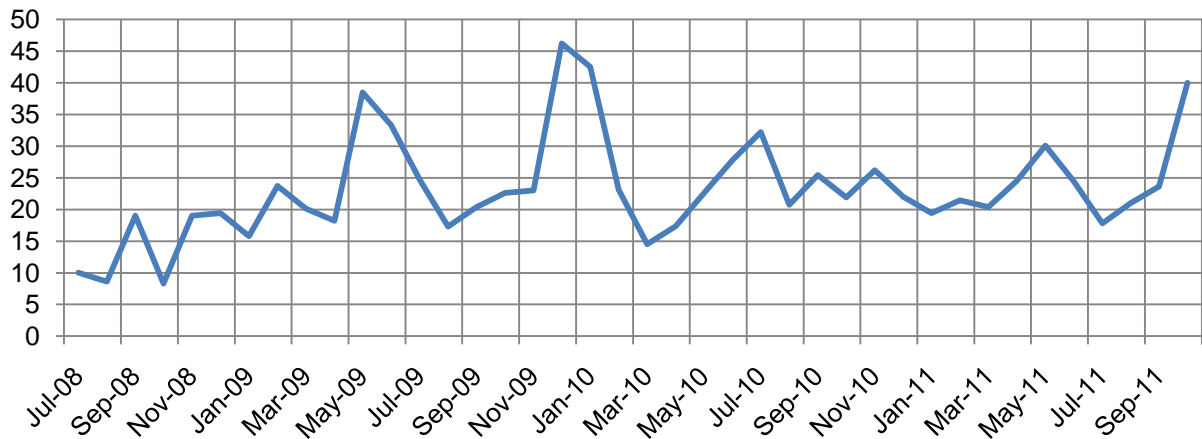
### 2.5.2 Average Number of Applications Decided by Month



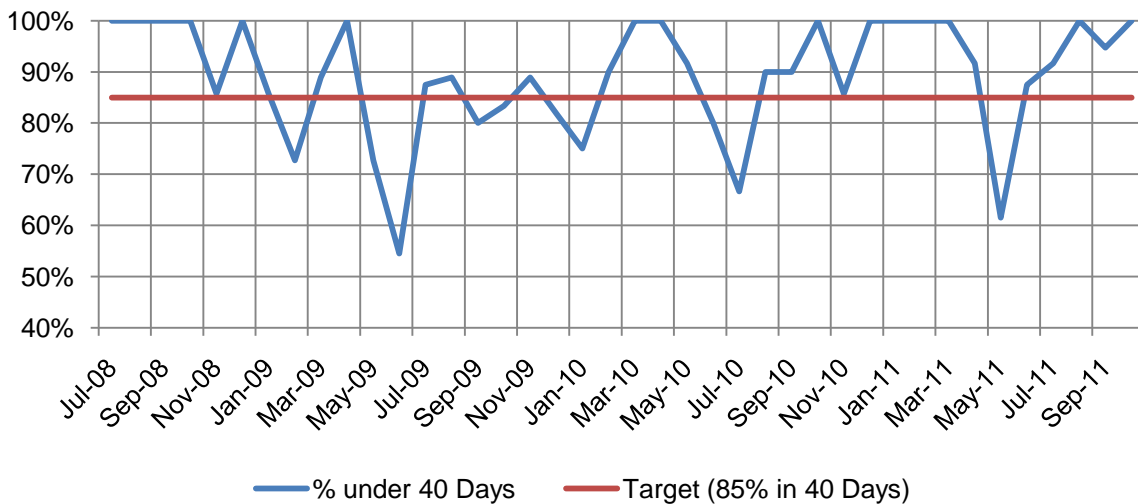
### 2.5.3 % of Applications Decided under 80 Days (Target 85% in 80 Days)



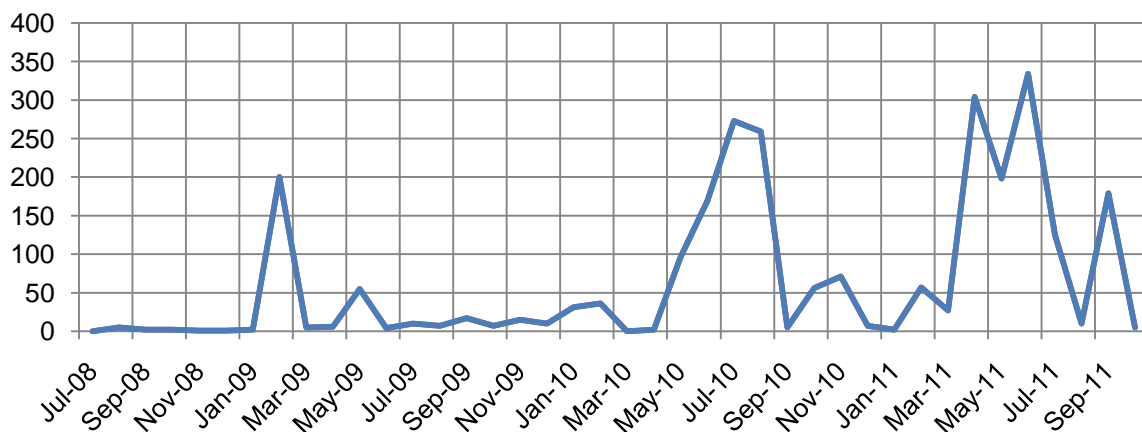
### 2.5.4 Average Days in Decision Making Period



### 2.5.5 % Days in Decision Making Period under 40 Days 85% (KPI-85% in 40 Days)



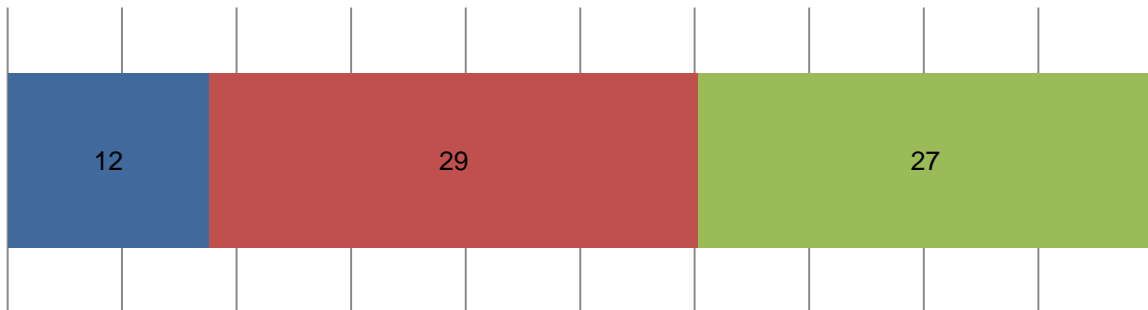
### 2.5.5 Number of Lots Approved



## 2.6 Concurrence Agency Applications

### 2.6.1 Assessment of Concurrence Agency Applications

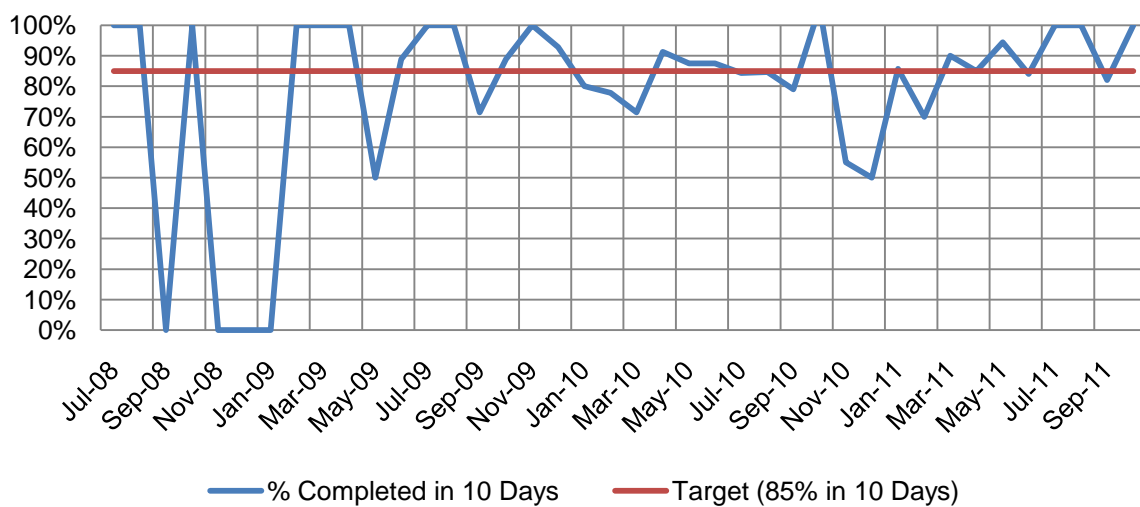
■ Active Applications (Beginning of Month) ■ Received Applications ■ Decided Applications



### 2.6.2

Description	Current Month	Previous 3 Months	Average Since July 2008	Target
New Applications Received	29	28	15	
Applications Decided	27	27	14	
Average Days to Decide	8	9	7	85% in 15 Days

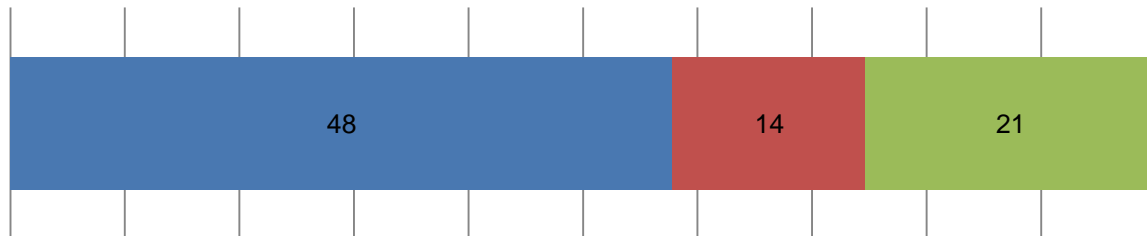
### 2.6.3 % Days to Decide an Application - under 10 Days (KPI-85% in 10 Days)



## 2.7 Operational Works

### 2.7.1 Assessment of Operational Works Request

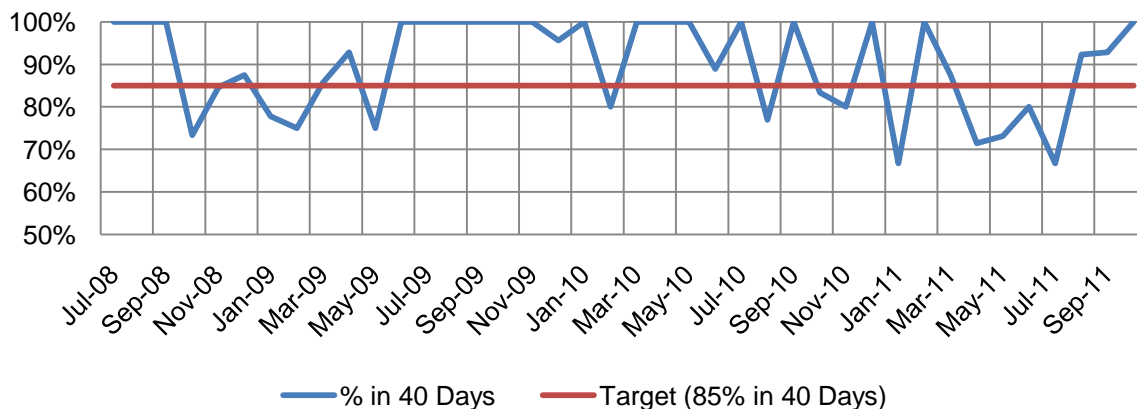
■ Active Applications (Beginning of Month) ■ Received Applications ■ Decided Applications



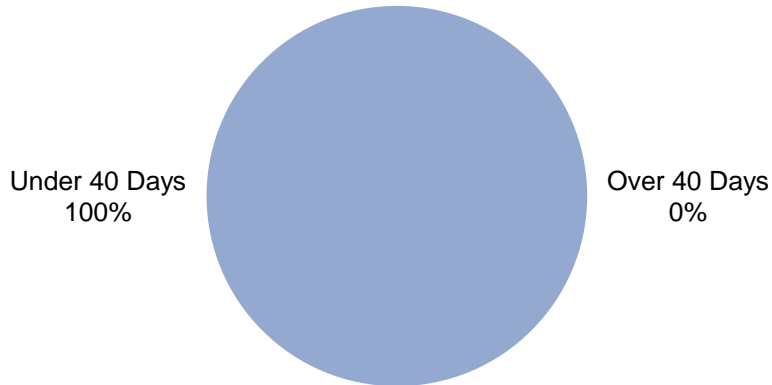
### 2.7.2

Description	Current Month	Previous 3 Months	Average Since July 2008	Target
New Request Received	14	15	11	
Applications Requiring Information Request	0	2	4	No More than 50 %
Average Information Request Days	-	14	7	85% in 40 Days
Average Days in Decision Making Period	17	19	19	85 % in 40 Days
Average Days to Decide a Request	41	74	79	85% in 80 Days

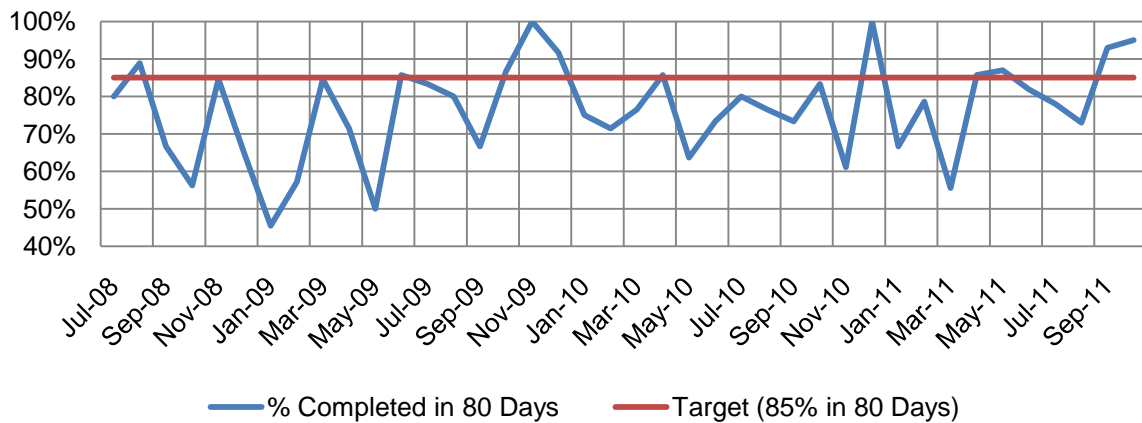
### 2.7.3 % Days in Decision Making Period under 40 Days 85% (KPI-85% in 40 Days)



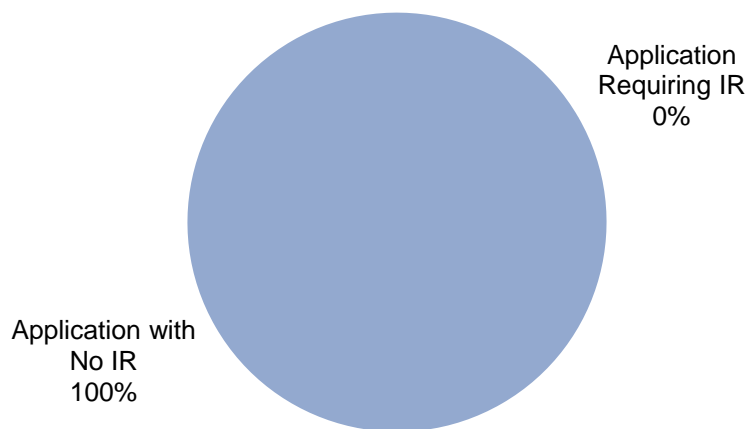
**2.7.4 Decision Making Period Completed Under 40 Days (KPI)**



**2.7.5 Days to Decide an Application - under 80 Days (KPI-85% in 80 Days)**



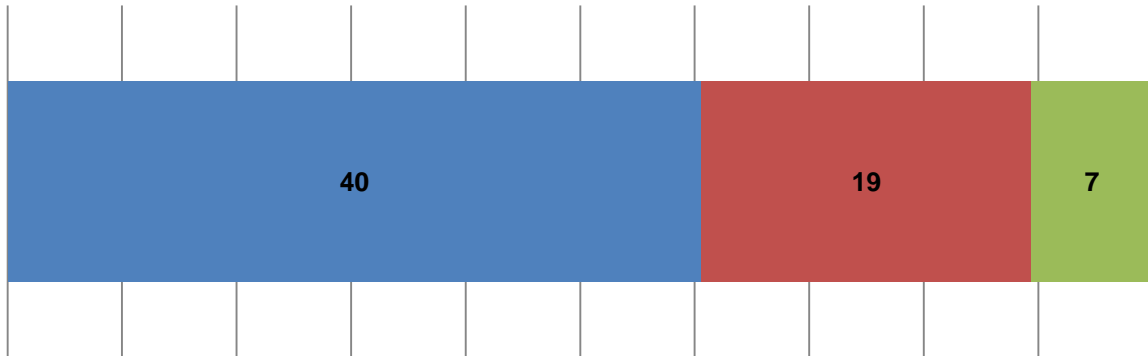
**2.7.6 Applications with Information Request (KPI <50%)**



## 2.8 Plan Sealing

### 2.8.1 Assessment of Plan Sealing Applications

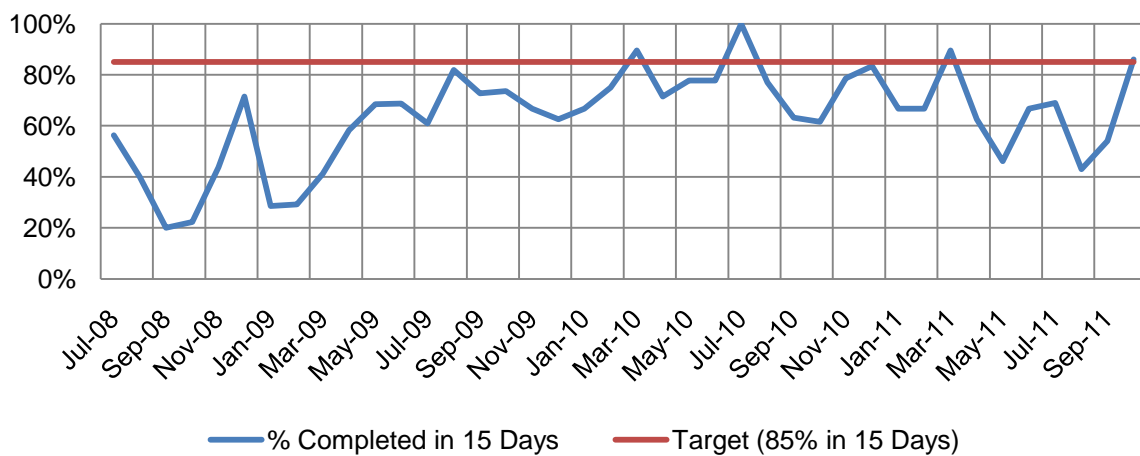
■ Active Applications (Beginning of Month) ■ Received Applications ■ Decided Applications



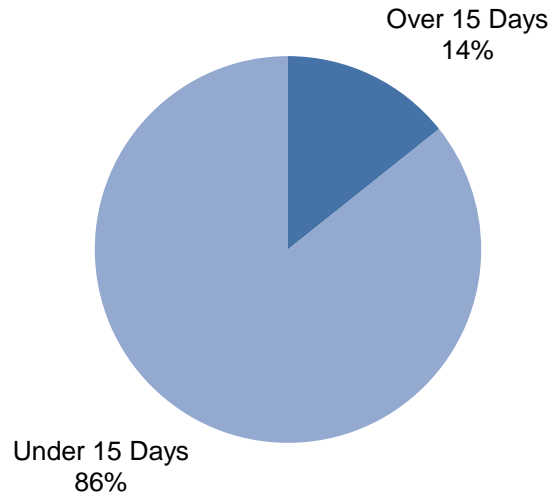
### 2.8.2

Description	Current Month	Previous 3 Months	Average Since July 2008	Target
Applications Received	19	9	15	
Plans Sealed	7	12	14	
Average Days to Decide	11	20	24	85% in 15 Days
Number of Lots Approved	63	88	88	

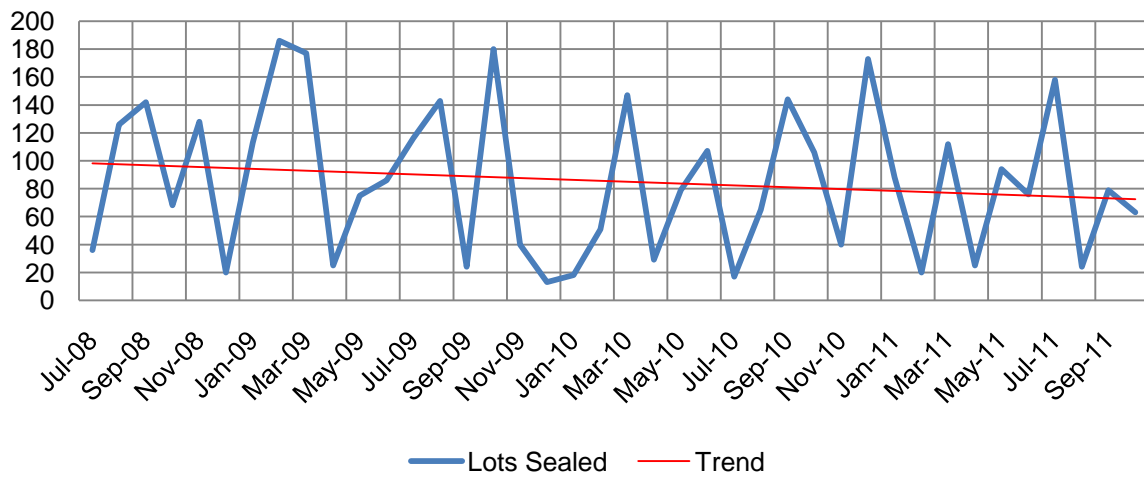
### 2.8.3 Days to Decide an Application - under 15 Days (KPI-85% in 15 Days)



**2.8.4 Time to Decide an Application Under 15 Days (KPI)**

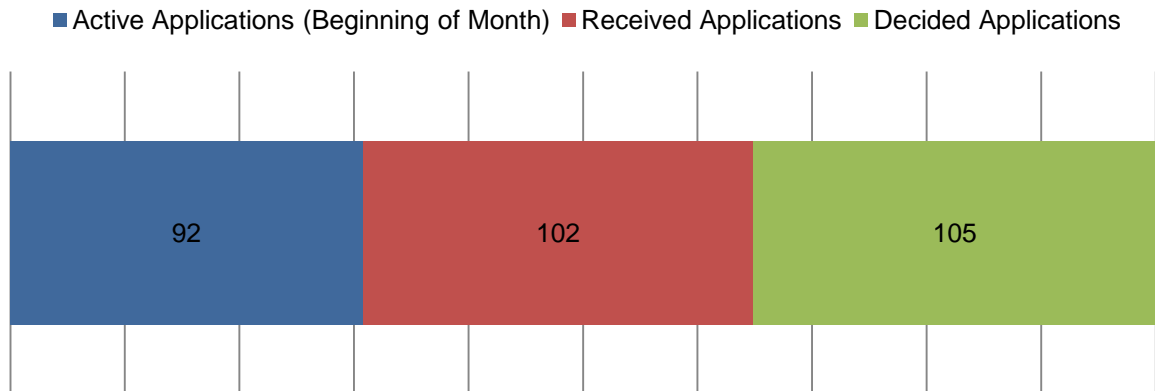


**2.8.5 Number of Lots Sealed**

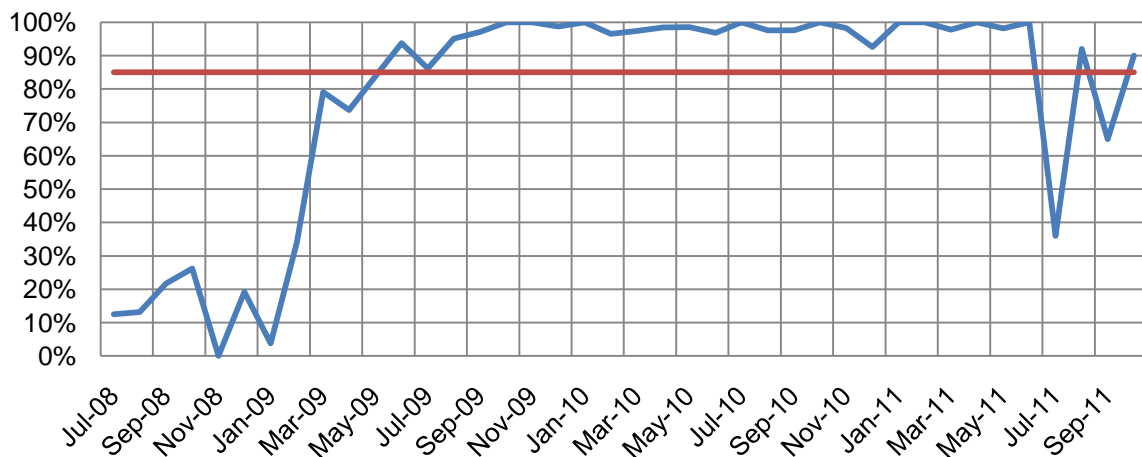


## 2.9 Minor Works Applications

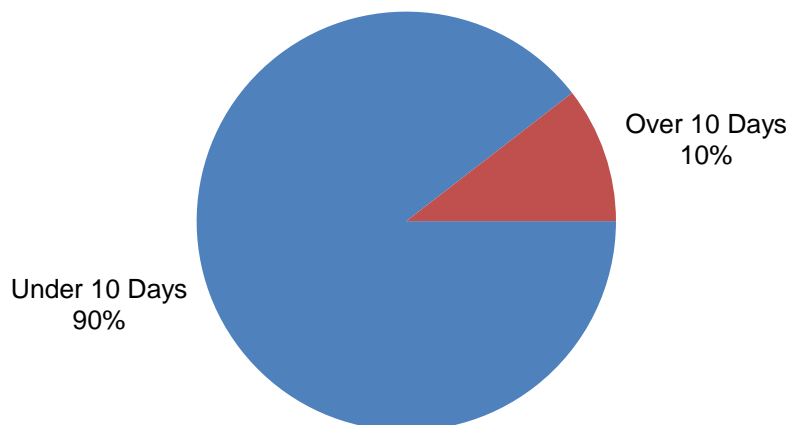
### 2.9.1 Assessment of Minor Works Applications



### 2.9.2 Days to Decide an Application - under 10 Days (KPI-85% in 10 Days)



### 2.9.3 Applications Decided under 10 Days (KPI)

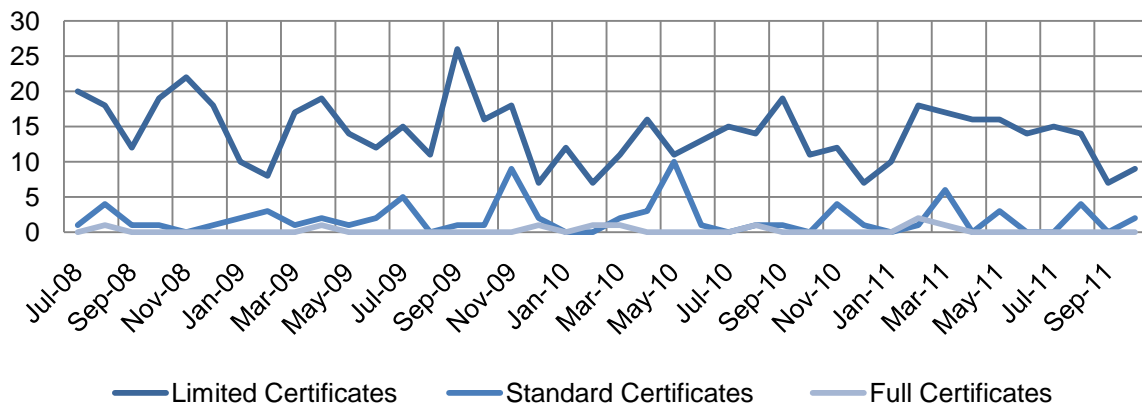


## 2.10 Planning Certificates

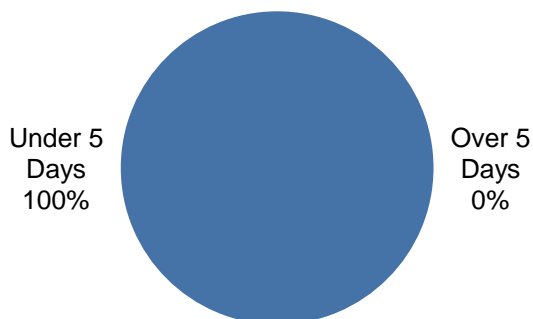
### 2.10.1 Planning Certificates Issued

Description	Current Month	Previous 3 Months Average	Average Since July 2008	Target
Limited Planning Certificate	9	12	15	85% in 5 Days
Standard Planning Certificate	2	4	2	85% in 10 Days
Full Planning Certificate	0	0	1	85% in 30 Days

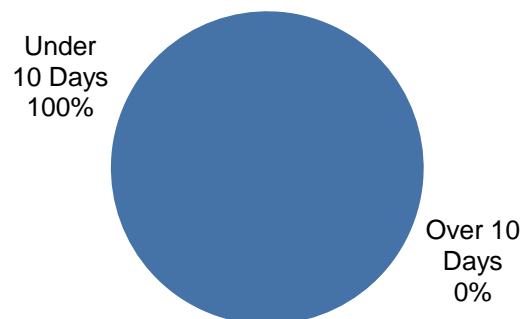
### 2.9.2 Planning Certificates Requests Received



### 2.10.3 Limited Certificates Issued under 5 Days (KPI)



### 2.9.4 Standard Certificates Issued under 10 Days (KPI)



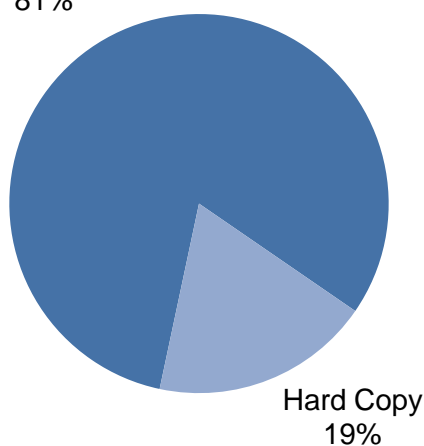
### 3. ePlanning

#### 3.1.1

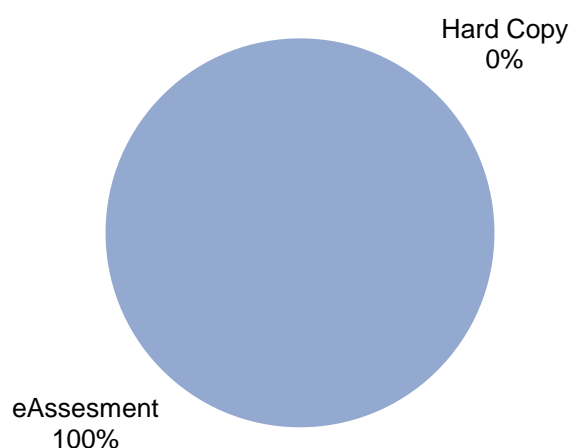
Description	Current Month	Monthly Average - last 3 months	Monthly Average since Feb 2011
Applications lodged through Smart eDA (MCU,ROL & OW)	26	24	24
Applications assessed electronically	27	51	46

#### 3.5.2 Applications Lodged via Smart eDA (More than 75% KPI)

Smart eDA  
81%



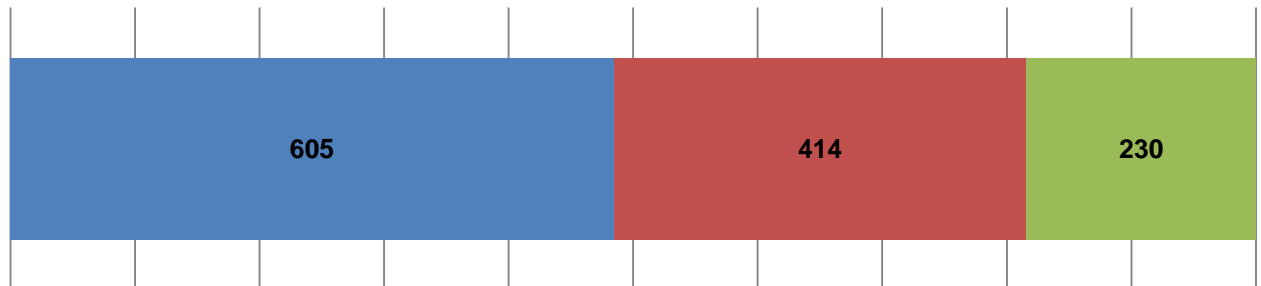
#### 3.5.3 Applications Assessed Electronically (More Than 90% KPI) - % of all Applications Received



## 4. Customer Requests

### 4.1.1 Customer Requests

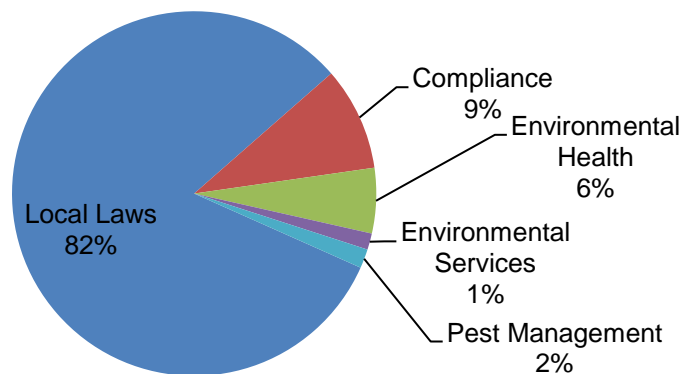
■ Active Requests (At Beginning of Month)
 ■ New Requests Received
 ■ Completed Requests



### 4.1.2 Requests Received

Request Type	Total	Previous 3 Months Average	Average Since July 2008
Local Laws	339	384	412
Compliance	38	53	50
Environmental Health	24	28	20
Environmental Services	6	7	5
Pest Management	7	6	7

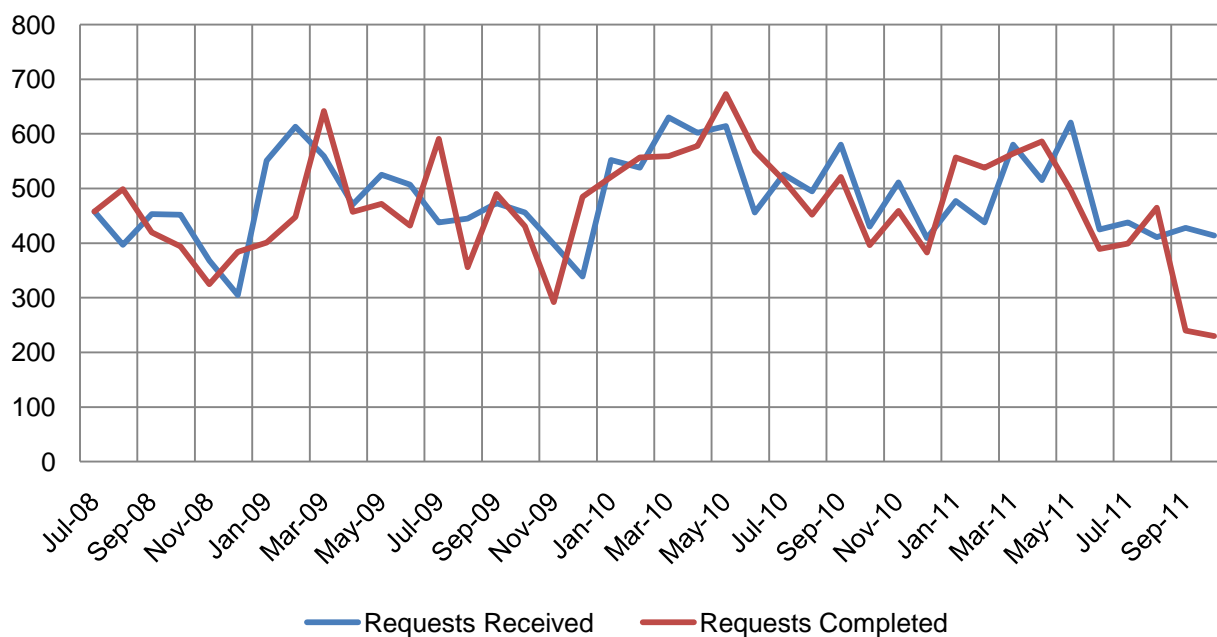
### 4.1.3 Percentage Requests Received by Area



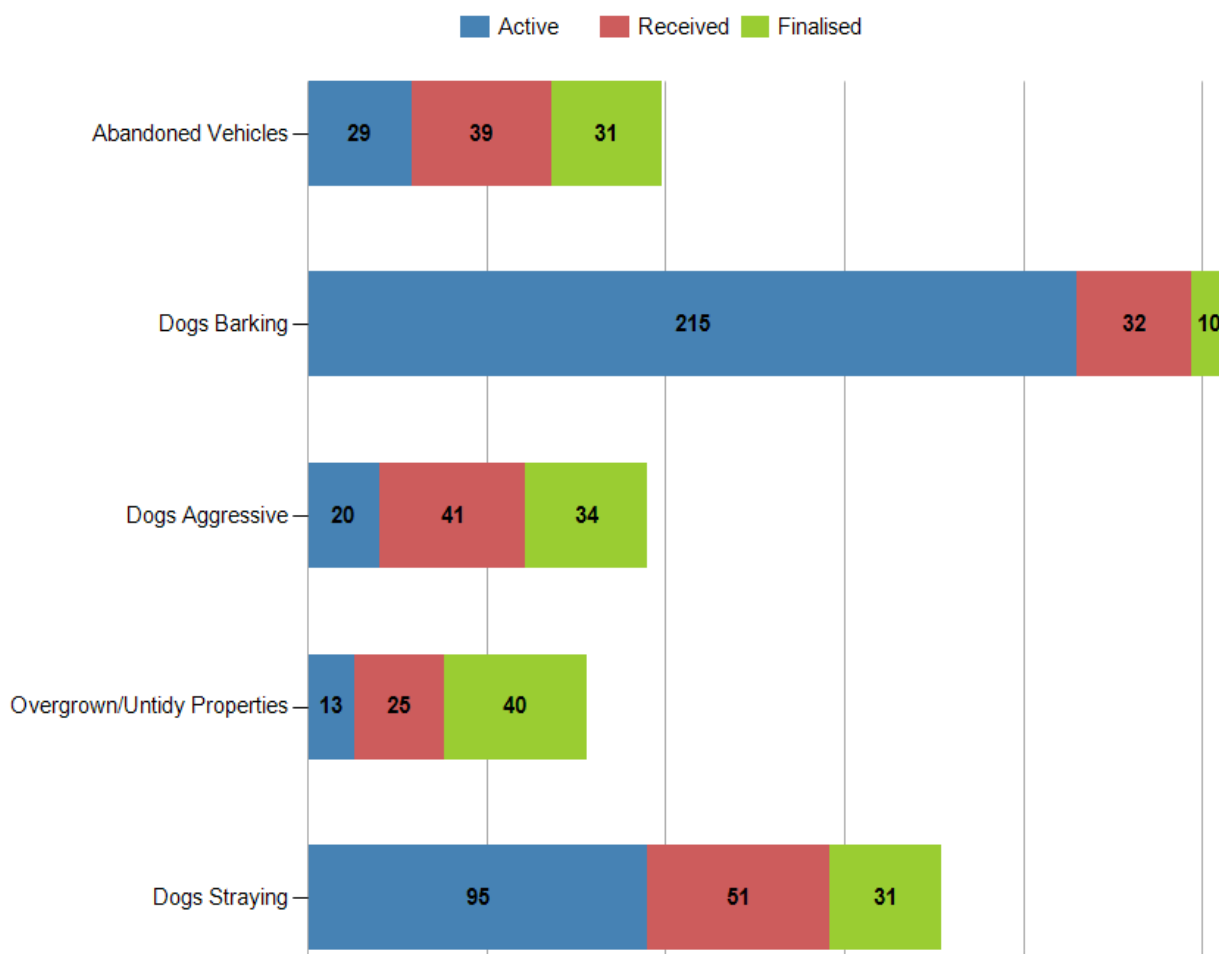
#### 4.1.4 Requests Completed

Request Type	Total	Average Days to Complete	Monthly Average Since July 2008	Average Days to Complete Since July 2008
Local Laws	176	2	364	18
Compliance	42	3	58	30
Environmental Health	6	6	15	16
Environmental Services	1	1	4	40
Pest Management	5	3	7	12

#### 4.1.5 Number of Requests Received vs Completed



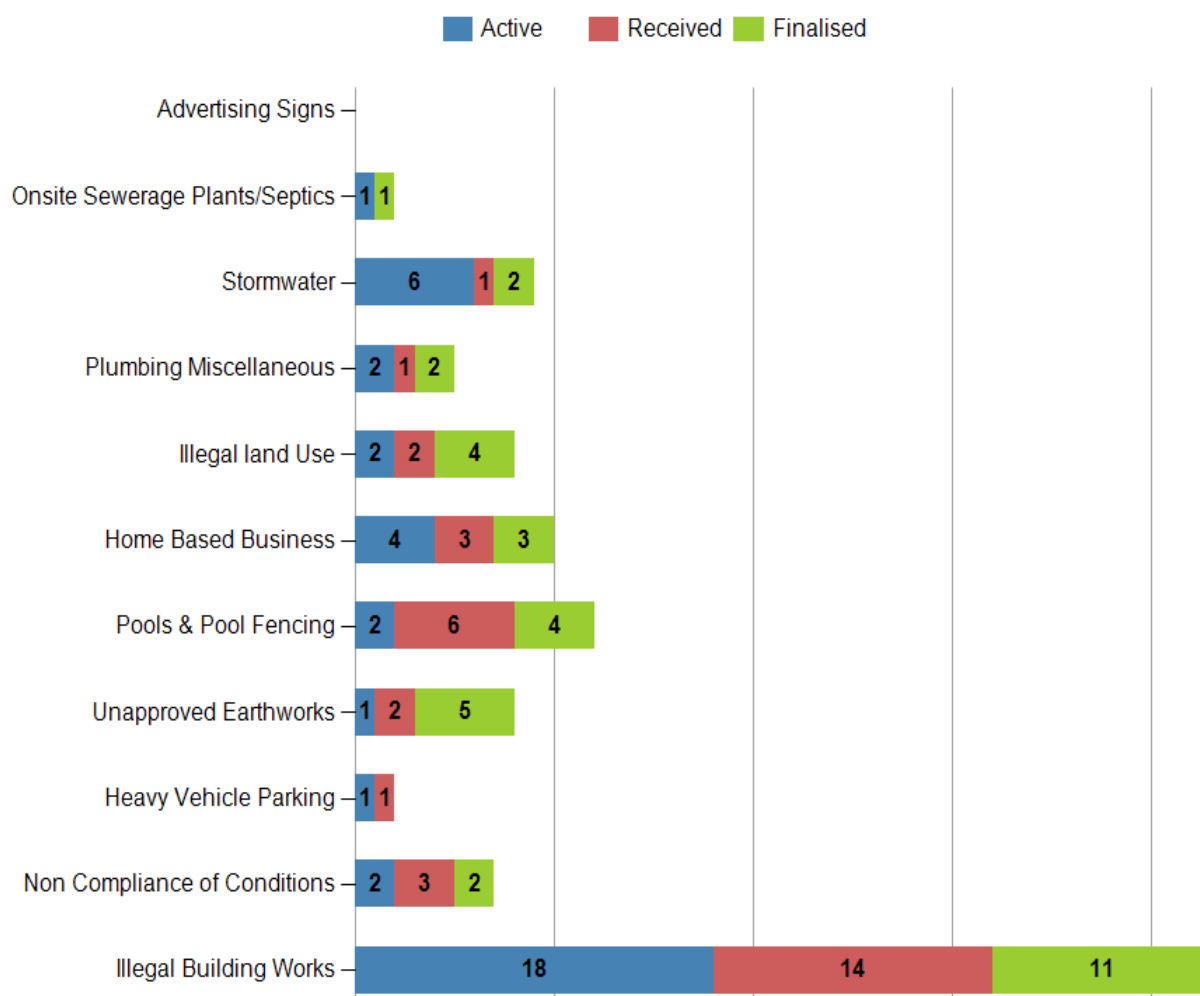
#### 4.2.1 Progress of Local Laws Customer Requests



#### 4.2.2 Local Laws Requests - Highlights

Request Type	Active	Received	Finalised
Dogs Straying	95	51	31
Overgrown/Untidy Properties	13	25	40
Dogs Aggressive	20	41	34
Dogs Barking	215	32	10
Abandoned Vehicles	29	39	31

### 4.3.1 Compliance Requests Highlights

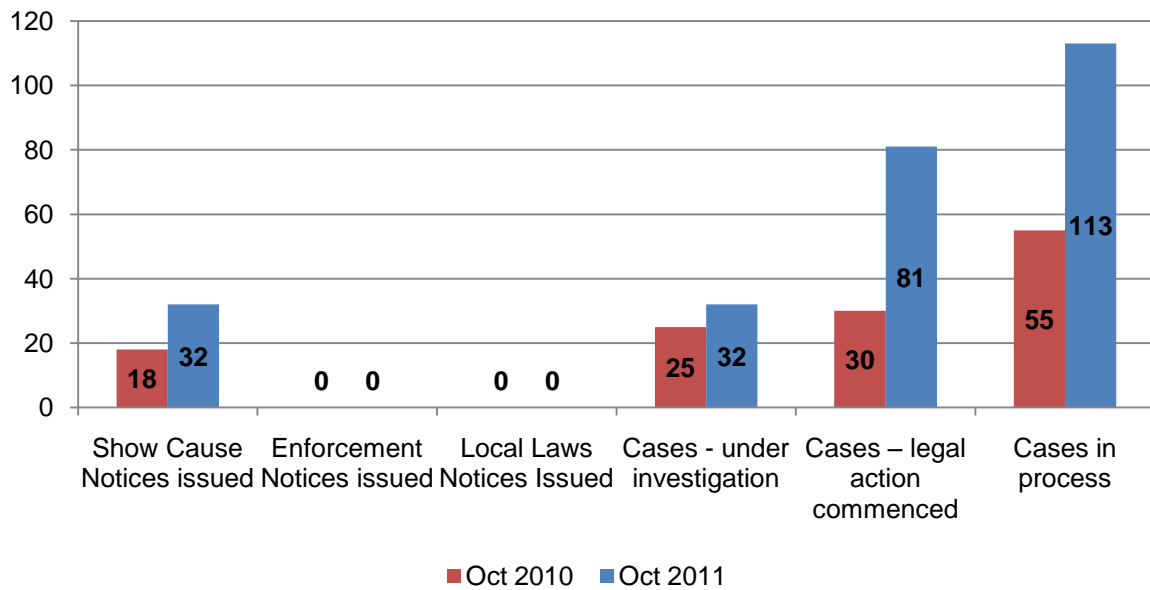


### 4.3.2 Compliance Requests Highlights

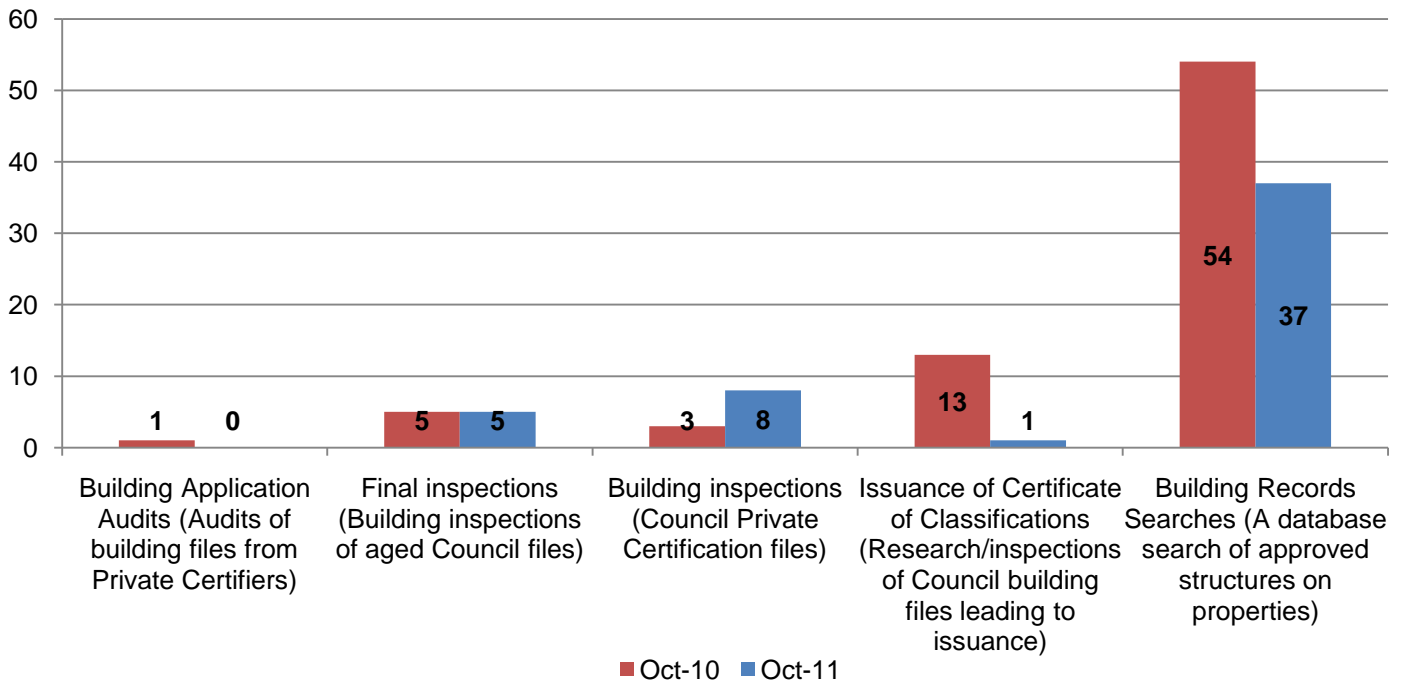
Category	Active	Received	Finalised
Illegal Building Works	18	14	11
Non Compliance of Conditions	2	3	2
Heavy Vehicle Parking	1	1	0
Unapproved Earthworks	1	2	5
Pools & Pool Fencing	2	6	4
Home Based Business	4	3	3
Illegal land Use	2	2	4
Plumbing Miscellaneous	2	1	2
Stormwater	6	1	2
Onsite Sewerage Plants/Septics	1	0	1
Advertising Signs	0	0	0

### 4.3 Status of Compliance Activities

#### 4.3.1 Compliance Activities

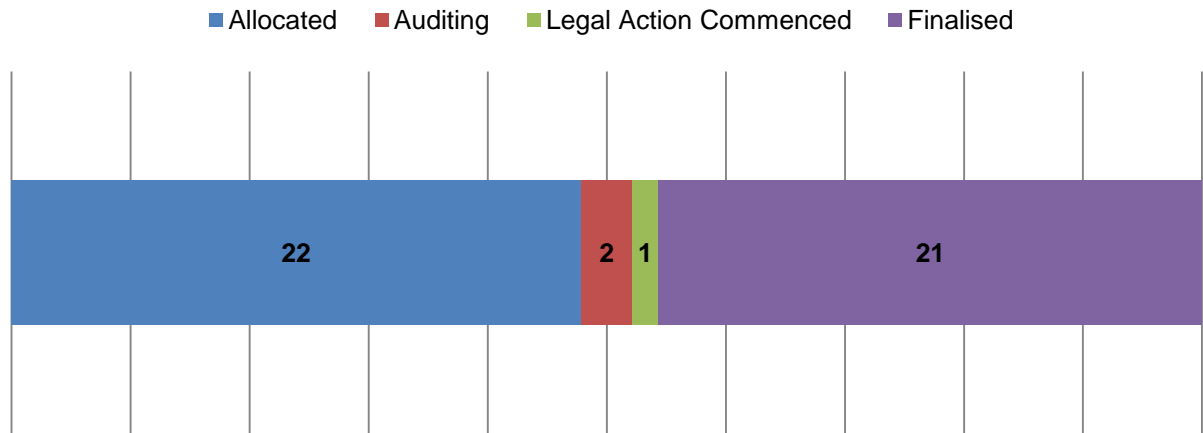


#### 4.4.2 Governance

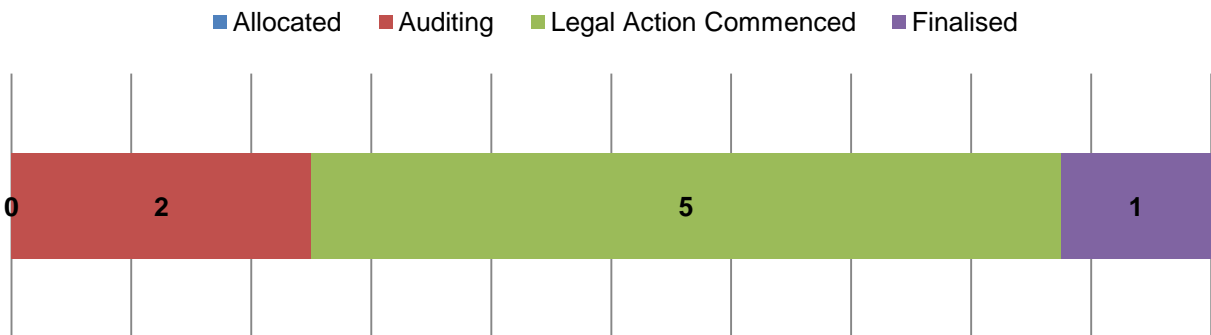


### 4.3.3 Proactive Audits

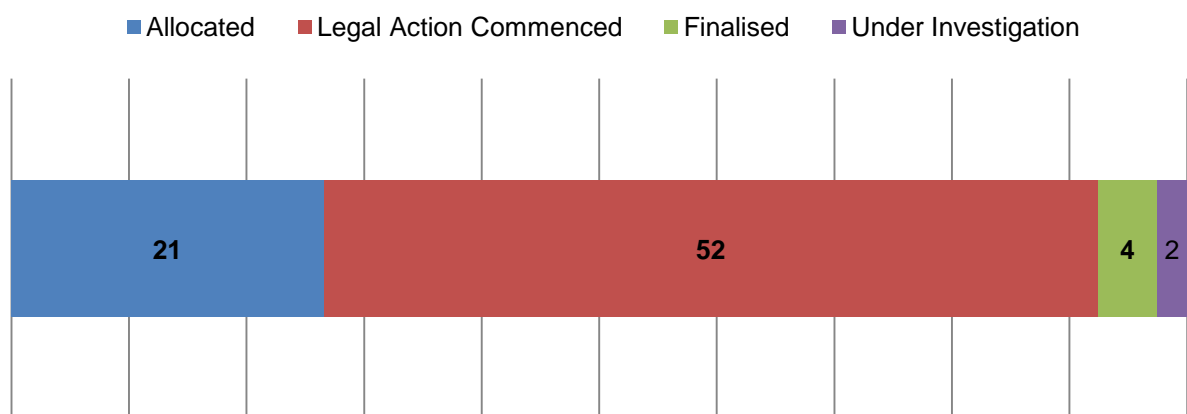
#### Material Change of Use Audit



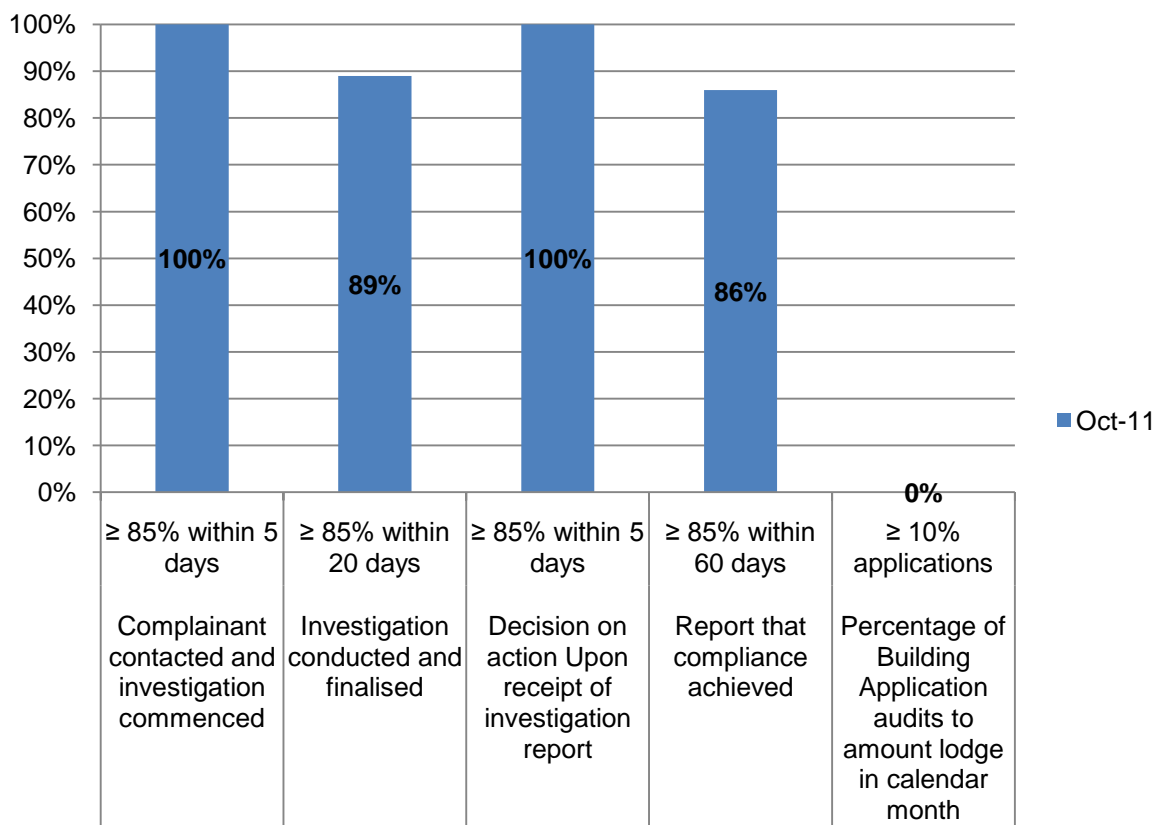
#### Planning Audit



#### Lapsed Applications

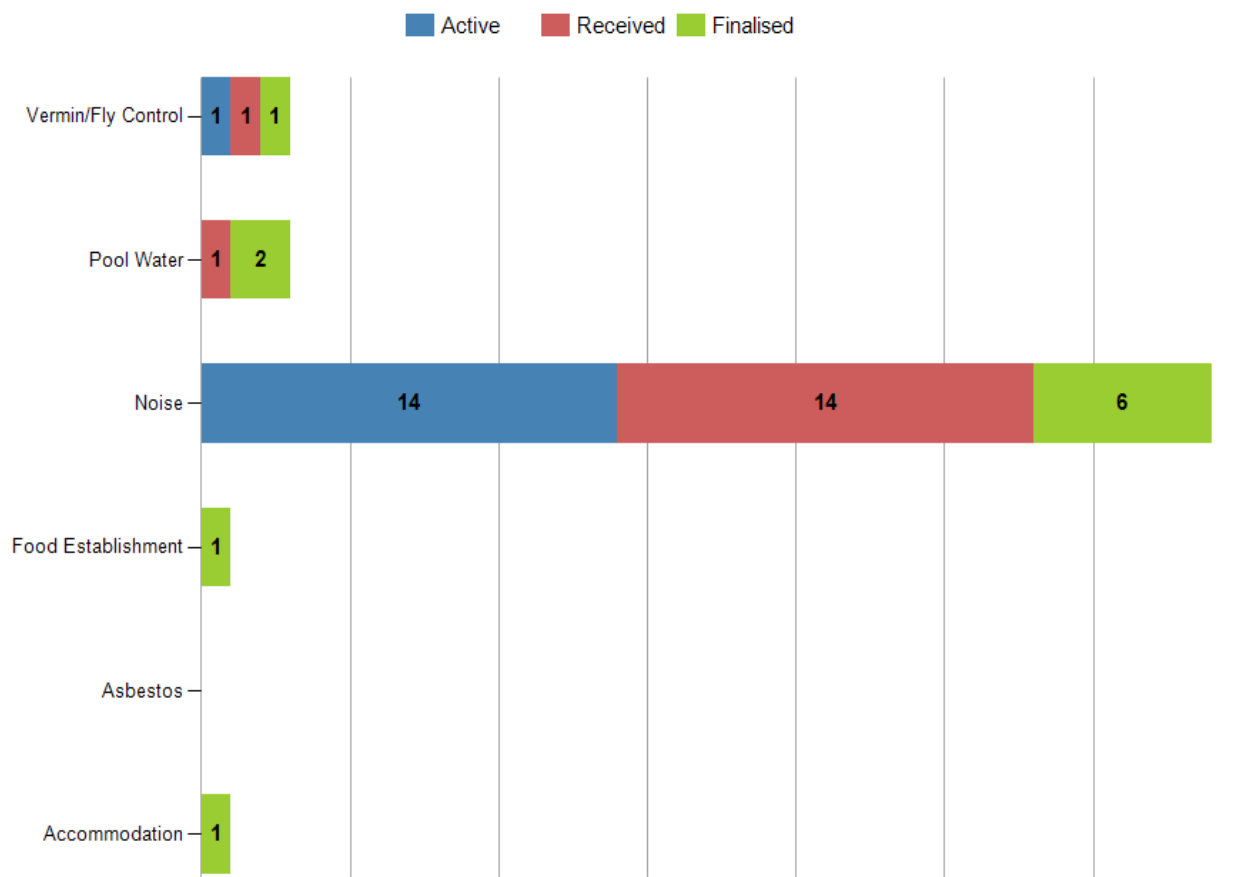


#### 4.4.4 Key Performance Indicators



- 6 protracted complaints finalised that were >60 days, 1 (65) relating swimming pool matters, 3 (79, 86 and 83 days) related to protracted building issues and 2 (75 and 78 days) related to planning matters.
- \$169,362.65 in outstanding contributions recovered in month.
- \$2,145,192.07 total contributions recovered since audits commenced in May 2010.
- 43% (9) of audits conducted, the development had not yet commenced.

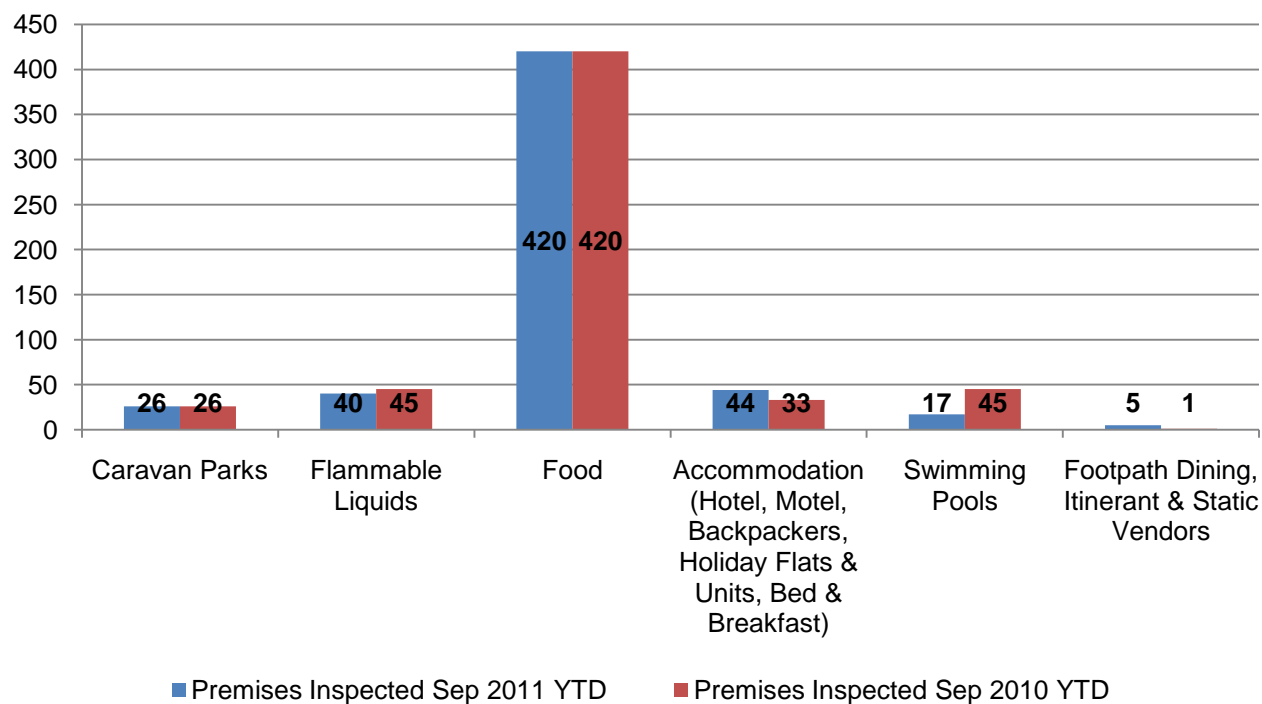
#### 4.4.1 Environmental Health Requests – Highlights



#### 4.4.2 Environmental Health Requests – Highlights

Request Type	Active (Beginning of Month)	Received	Finalised
Accommodation	0	0	1
Asbestos	0	0	0
Food Establishment	0	0	1
Noise	14	14	6
Pool Water	0	1	2
Vermin/Fly Control	1	1	1

### 4.5.3 Inspections - Licensed Premises



### 4.4.4 Inspections - Licensed Premises

Premises	Premises Inspected Sep 2011 YTD	Premises Inspected Sep 2010 YTD	Total No. of Licensed Premises	Target Measure - % Inspected Premises YTD
Caravan Parks	26	26	23	113
Flammable Liquids	40	45	144	28
Food	420	420	522	76
Accommodation (Hotel, Motel, Backpackers, Holiday Flats & Units, Bed & Breakfast)	44	33	66	67
Swimming Pools	17	45	73	23
Footpath Dining, Itinerant & Static Vendors	5	1	31	16

#### 4.5.1 Progress of Environmental Services Customer Requests



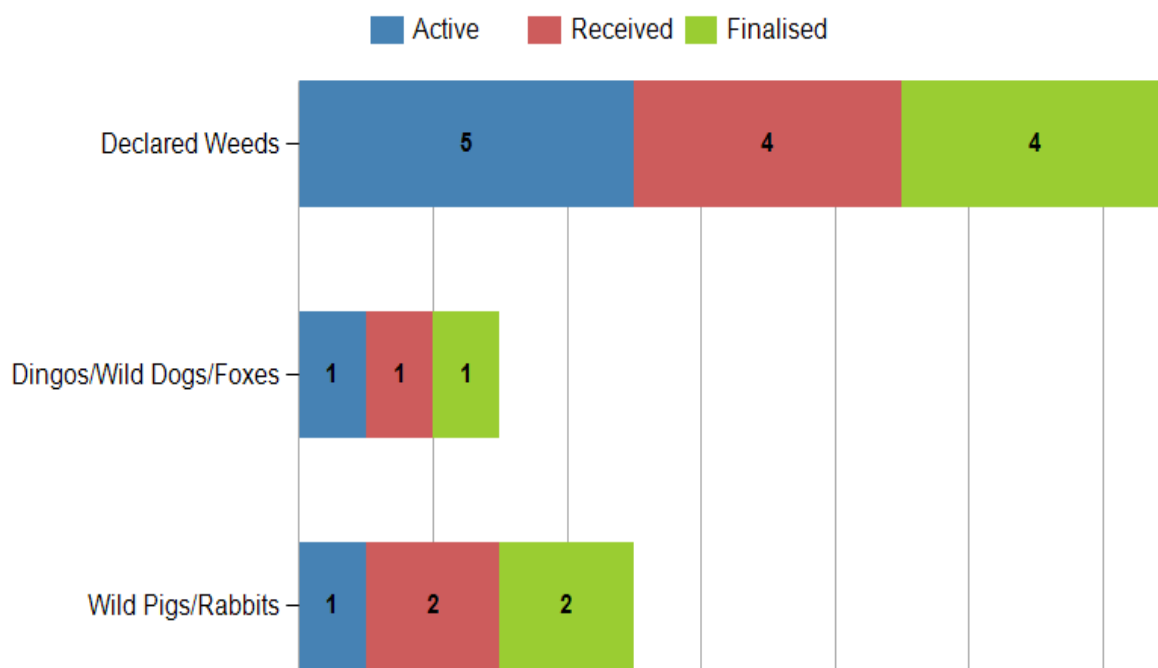
#### 4.5.2 Environmental Services Requests – Highlights

Request Type	Active	Received	Finalised
Health Miscellaneous	15	5	4
Illegal Land Use	3	2	4
Chemical or Paint Overspray	5	1	0

#### 4.5.3 Environmentally Relevant Activity Registrations

Categories	Inspections
Chemical Storage	0
Motor Vehicle Workshop	1
Boiler Making	0
Metal Forming	0

#### 4.6.1 Progress of Pest Management Customer Requests



#### 4.6.2 Pest Management Requests – Highlights

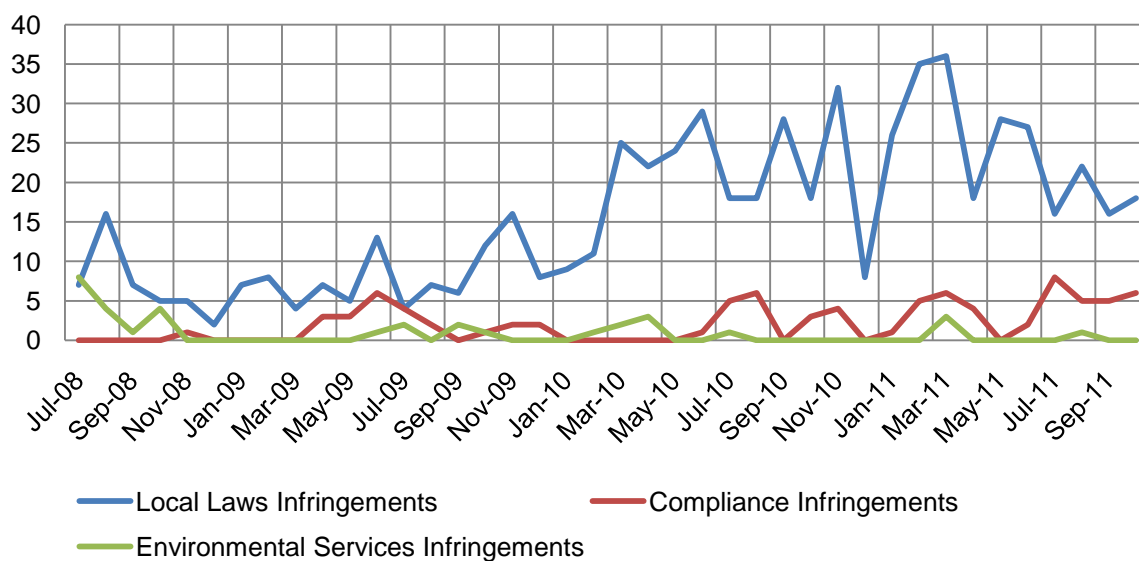
Request Type	Active	Received	Finalised
Wild Pigs/Rabbits	1	2	2
Dingos/Wild Dogs/Foxes	1	1	1
Declared Weeds	5	4	4

## 5.1 Infringements

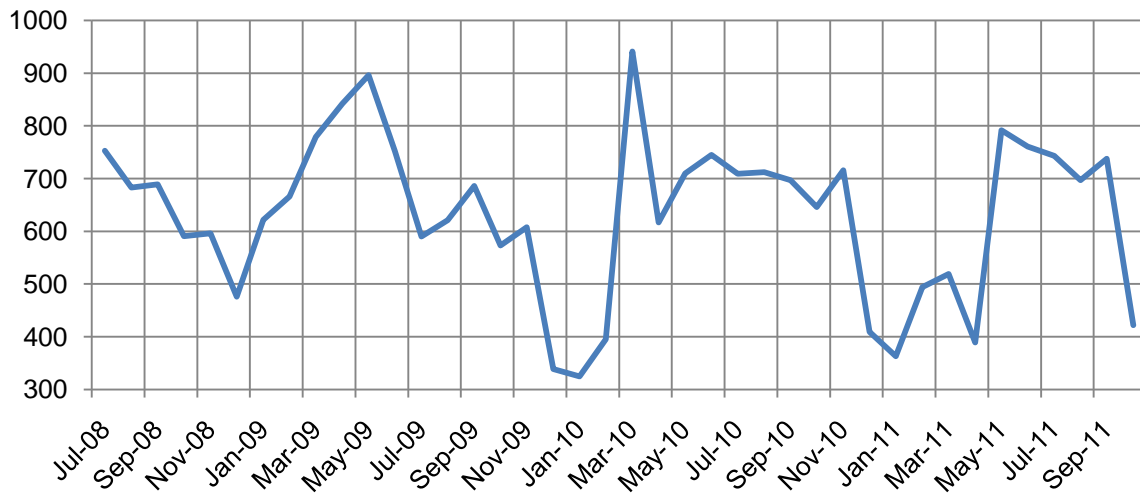
### 5.1.1 Infringements Issued

Request Type	Total	Monthly Average	Average since July 2008
Regulated Parking	422	722	632
Local Laws	18	19	16
Compliance	9	6	4
Environmental Services	0	1	2
Environmental Health	0	0	0

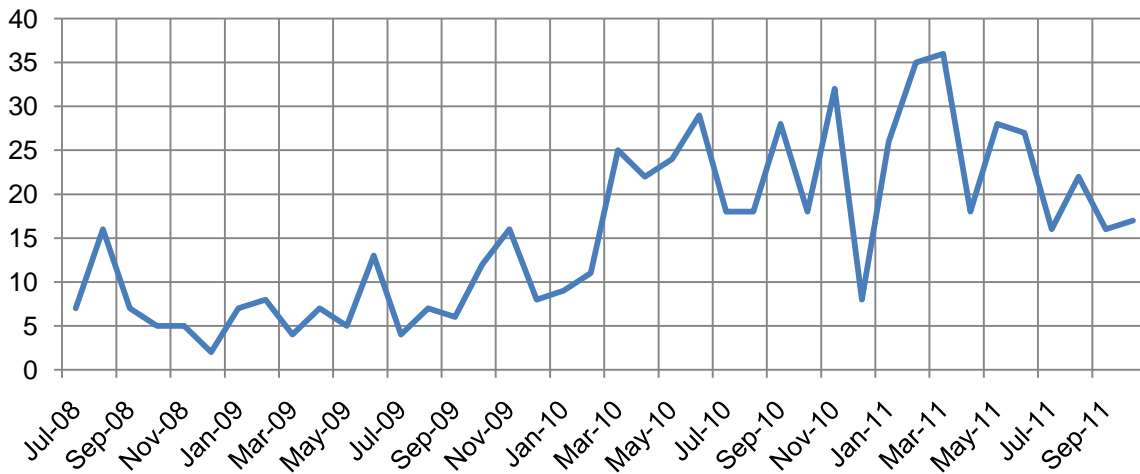
### 5.1.2 Local Laws, Compliance, Environmental Health and Environmental Services Issued Since July 2008



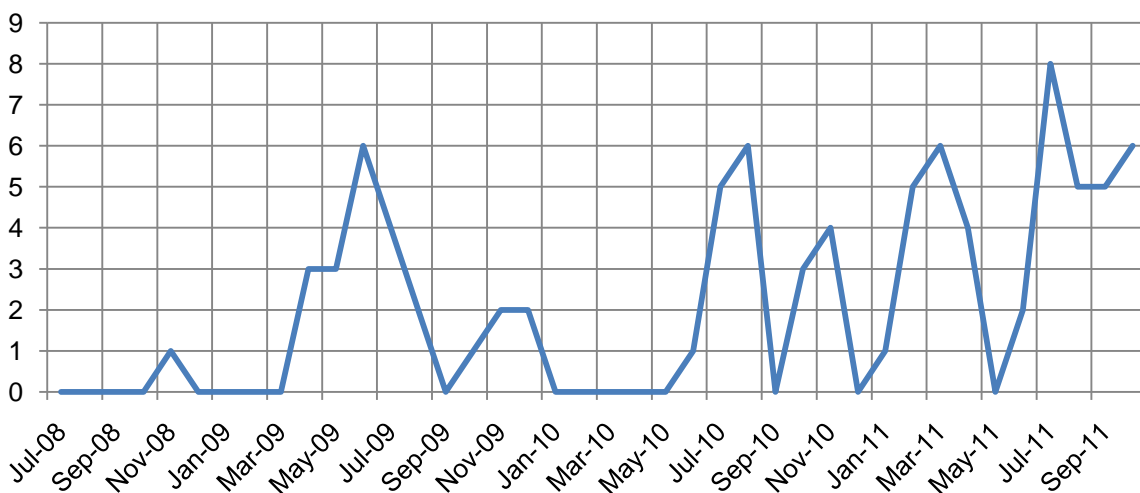
### 5.2 Regulated Parking Infringements Issued Since July 2008



### 5.3 Local Laws Infringements Issued Since July 2008



### 5.4 Compliance Infringements Issued Since July 2008

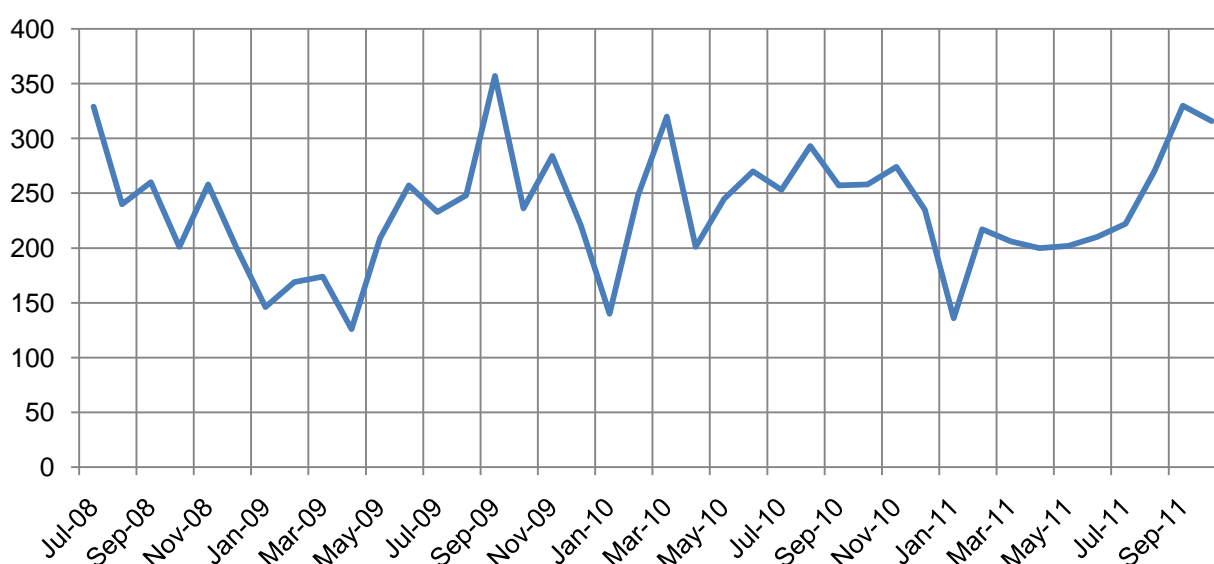


## 6. Domestic Building Works

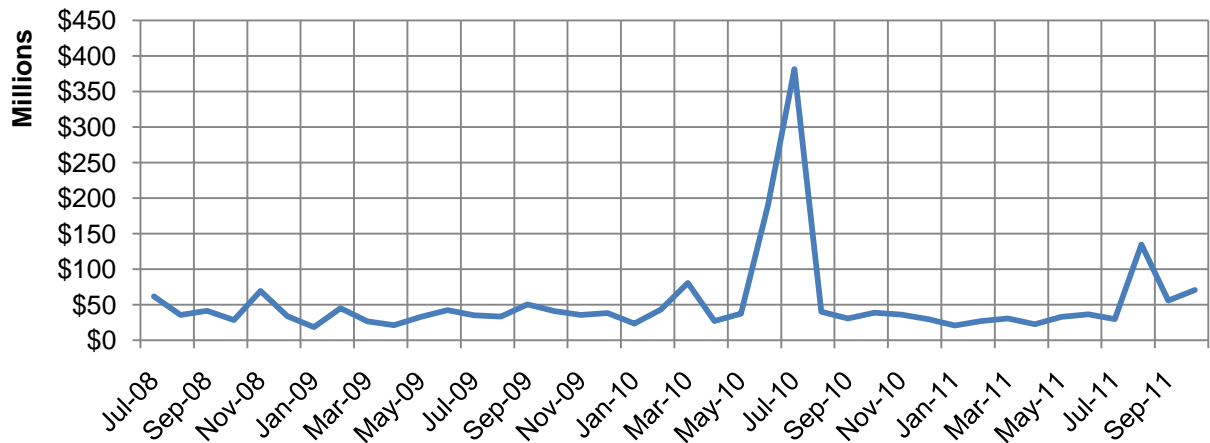
### 6.1.1

	Current Month	Value of Works	Previous 3 Months Average	3 Month Average Value of Works	Average since July 2008	Average Value of Since July 2008
<b>Applications - All</b>	316	\$70,974,789	274	\$73,803,733	220	\$49,189,034
<b>Applications - Residential</b>	101	\$32,562,537	87	\$27,091,030	69	\$21,586,359
<i>Average Dwelling Size</i>	243 m2	\$322,401	245 m2	\$312,589	243 m2	\$312,184
<i># of Detached Dwellings</i>	96	\$29,104,437	82	\$23,706,237	67	\$19,611,969
<i>Average Value of Detached Dwelling \$</i>	-	\$303,171	-	\$287,930	-	\$291,866
<i># of Attached Dwellings</i>	14	\$3,458,100	16	\$3,384,793	8	\$2,023,249
<i>Average Cost of Attached Dwellings \$</i>	-	\$247,007		\$207,232	-	\$240,148
<i>Additions and Alterations</i>	30	\$1,336,579	24	\$2,204,662	24	\$1,257,267

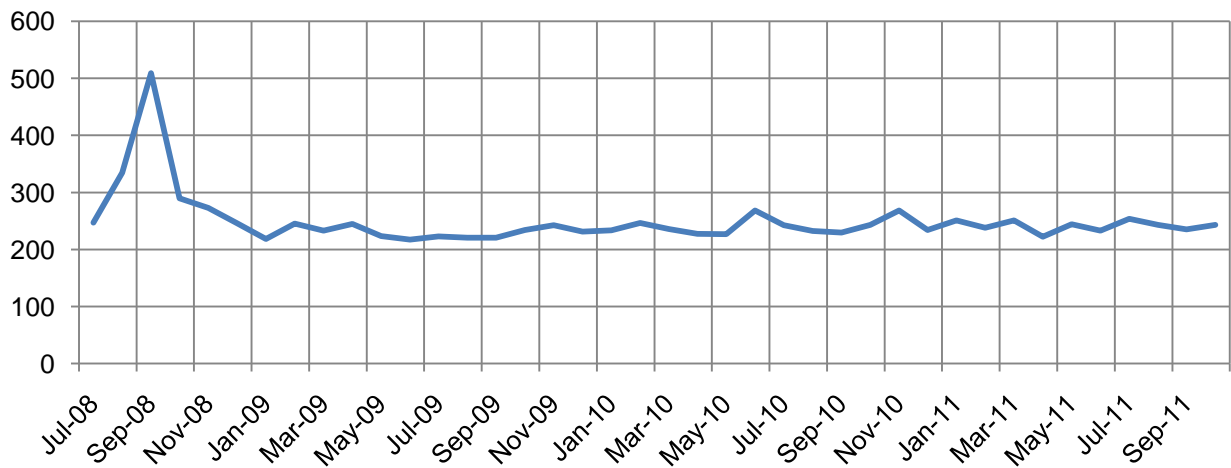
### 6.1.2 Building Applications Recieved Since July 2008



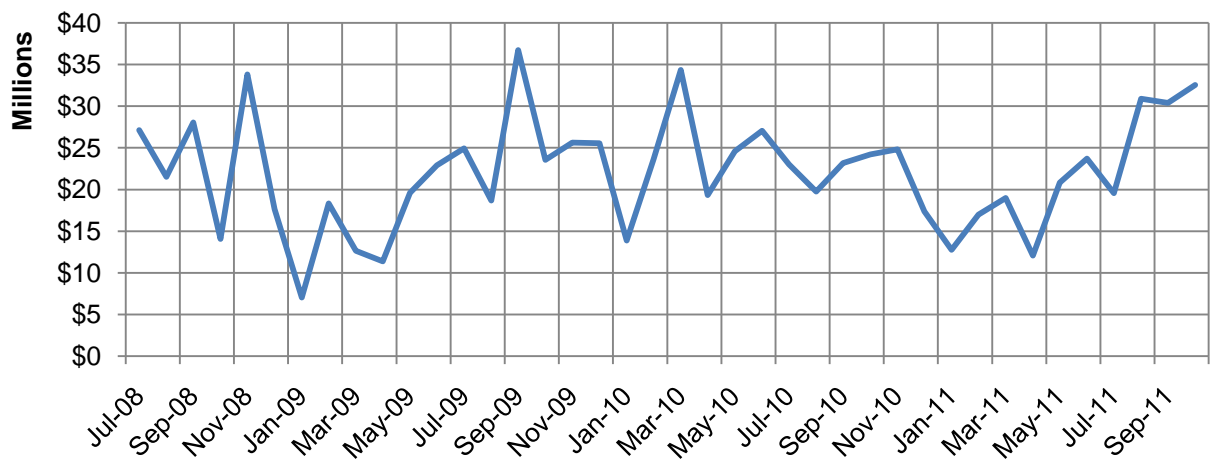
### 6.1.3 Value of All Building Applications Since July 2008



### 6.1.4 Average Floor Area of Residential Building Applications



### 6.1.5 Value of Residential Building Applications



**7 Business Improvement – Business Support Unit**
*Legend*
*In Progress* ✓

*Completed* ✓

*Key Deliverables* Red

Project Phase	Deliverables	Milestones	Sept	Oct
<b>Donated Asset Management (DAM)</b> Management of the civil construction, plan signing and on and off maintenance processes associated with donated assets	<ul style="list-style-type: none"> <li>• First Draft of White Paper on Development Engineering Operations</li> <li>• DAM Project Management Plan</li> <li>• Stakeholder Interviews completed and documented</li> <li>• File Survey</li> <li>• 'As Is' Report Completed</li> <li>• Gap Analysis report Completed</li> </ul>	<ul style="list-style-type: none"> <li>• 9/09/2011</li> <li>• 16/09/2011</li> <li>• 14/10/2011</li> <li>• 21/10/2011</li> <li>• 28/10/2011</li> <li>• 25/11/2011</li> </ul>	✓	
<b>Environmental Health Pathway Development</b> Generation of Documents from Pathway and Procedure Manual	<ul style="list-style-type: none"> <li>• Project schedule created in draft.</li> <li>• First team meeting scheduled for 14 Sept. Project schedule confirmed</li> <li>• <b>Beginners Guide to Pathway</b></li> <li>• List of Templates</li> <li>• Health Officers Processes</li> <li>• Administration Processes</li> <li>• Naming Convention</li> </ul>	<ul style="list-style-type: none"> <li>• 12/09/2011</li> <li>• 14/09/2011</li> <li>• 02/12/2011</li> <li>• 31/01/2012</li> <li>• 29/03/2012</li> <li>• 03/09/2012</li> <li>• 03/09/2012</li> </ul>	✓	✓
<b>Online Public Submissions</b> Lodge submissions online.	<ul style="list-style-type: none"> <li>• Need changes to Statutory Forms.</li> <li>• Amend notification guideline.</li> <li>• Implement and educate in use.</li> </ul>	<ul style="list-style-type: none"> <li>• 21/10/2011</li> <li>• 30/11/2011</li> <li>• 1/12/2011</li> </ul>	✓	✓
<b>Infrastructure Charges Implementation</b> Deliver a register for infrastructure charges & create a tracking process for Amended/Negotiated AICN's.	<ul style="list-style-type: none"> <li>• Create issues register</li> <li>• Schedule created</li> <li>• Business processes documented &amp; implemented</li> <li>• Strategic, Legal &amp; Operational Issues briefing to Council</li> <li>• Report to Council on philosophy / approach for AICN receipting &amp; expenditure (finance)</li> </ul>	<ul style="list-style-type: none"> <li>• 11/08/2011</li> <li>• 07/10/2011</li> <li>• 17/10/2011</li> <li>• 02/11/2011</li> </ul>	✓	✓
<b>DARP - OWL'S</b> Review of the Development Assessment Process of Operational Works and	<ul style="list-style-type: none"> <li>• Commitment Briefing</li> <li>• File Survey</li> <li>• Preliminary Findings</li> <li>• Final Report and</li> </ul>	<ul style="list-style-type: none"> <li>• 21/09/2011</li> <li>• October 2011</li> <li>• December 2011</li> <li>• May 2012</li> </ul>		✓

Project Phase	Deliverables	Milestones	Sept	Oct
Large Subdivisions.	Recommendations <ul style="list-style-type: none"> <li>• PMP</li> <li>• Schedule</li> </ul>	<ul style="list-style-type: none"> <li>• May 2012</li> <li>• June 2012</li> </ul>		
<b>Internal Referrals</b> Referral of applications between Development Assessment and Development Engineering	<ul style="list-style-type: none"> <li>• Create internal referral templates</li> <li>• Pathway workflow mapping proposal</li> <li>• Workflow mapping in test pathway</li> <li>• 'Visio' mapping</li> <li>• Implementation</li> </ul>	<ul style="list-style-type: none"> <li>• 18/10/2011</li> <li>• 04/11/2011</li> <li>• 22/11/2011</li> <li>• 30/11/2011</li> <li>• 01/12/2011</li> </ul>		✓
<b>Data Integrity – Pathway Refresher Training</b>	<ul style="list-style-type: none"> <li>• Create Project Management Plan</li> <li>• Schedule</li> <li>• Project Team</li> </ul>	<ul style="list-style-type: none"> <li>• November 2011</li> <li>• December 2011</li> <li>• December 2011</li> </ul>		✓

**8 200K Planning Scheme**

Legend

In Progress ✓

Completed ✓

 Key Deliverables *Red*


Project Phase		Deliverables	Milestones	Aug	Sep	Oct
<b>Stage 1</b>						
<b>Citation and Comment</b>		Align with final Strategic Framework	31/08/2011			
Briefing to Council (Strategic Framework)		Incorporate finalised Community Plan	01/09/2011			
<b>Stage 2</b>						
<b>Part 1</b>	<b>About the Planning Scheme</b>	Minor inputs	01/11/2011			
<b>Stage 3</b>						
<b>Part 2</b>	<b>State Planning Instruments</b>	Minor inputs	00/11/2011			
<b>Stage 4</b>						
<b>Part 3</b>		Distribute V0.2 (incorporating Regional Plan + localising statements)	13/07/2011			
		Distribute V0.3	29/07/2011			
		<b>Briefing to Council</b>	<b>10/08/2011</b>	✓		
		V0.4 : incorporating ongoing amendments as scheme is developed + maps	00/09/2011			✓
<b>Submission on Draft Regional Plan</b>		Draft Regional Plan released for comment	00/05/2011			
		Briefing to Council (comments of draft Regional Plan)	17/08/2011			
		Report to Council	24/08/2011			
		Submission made to DLGP	09/09/2011			
<b>Stage 5</b>						
<b>Part 4</b>	<b>Priority Infrastructure Plan</b>	Planning Assumptions	00/09/2011			
		PIA	01/02/2012			
		Dss	01/02/2012			
		Consolidate PFTI & Schedule of works	01/03/2012			
		Briefing to Council (consolidated PIP)	01/03/2012			

Project Phase		Deliverables	Milestones	Aug	Sep	Oct
<b>Stage 6</b>	<b>Tables of Assessment</b>	5. 5 Zones (Developed as part of each zone code)				
<b>Part 5</b>		Draft list	09/08/2011	✓		
		<b>Final list</b>	<b>00/12/2011</b>		✓	✓
		5.6 Zones (Developed as part of each LP)				
		Draft list	13/09/2011	✓	✓	
		<b>Final list</b>	<b>00/12/2011</b>			✓
		5.7 Overlays (Developed as part of each Overlay)				
		Draft list	30/09/2011	✓	✓	✓
		<b>Final list</b>	<b>11/12/2011</b>			✓
	5.8 RoL/Operation Works					
	Draft list	29/07/2011 (internal meeting on EDG)	✓	✓		
	<b>Final list</b>	<b>11/12/2011</b>			✓	
<b>Stage 7</b>	<b>Residential Densities Strategy Document</b>	Issue draft Strategy	00/01/2011			
<b>Part 6 Zones</b>		Consultation	00/04/2011			
		Planning scheme zones and yields	00/07/2011			
		Briefing to Council – summary of submissions and proposed amendments to the strategy	19/07/2011			
		Meeting with submitters	12/09/2011	✓	✓	
		Finalise draft document	01/12/2011			
		<b>Residential Zone Codes</b>				
		First draft + zone mapping amendments	9/08/2011	✓	✓	
		Second draft	24/08/2011			
		<b>Centres Strategy Document</b>				
		Issue draft Strategy (Internal)	27/07/2011	✓	✓	
	Briefing to Council – presentation of draft strategy	27/07/2011				
	Complete draft Strategy document	01/11/2011				
	Finalise supporting technical document (Macroplan)	8/08/2011	✓			
	Targeted consultation	2012				
	Consider comments	2012				
	Finalise draft strategy	2012				

Project Phase	Deliverables	Milestones	Aug	Sep	Oct	
Centres	First Drafts	9/08/2011	✓	✓	✓	
	Second Drafts	00/09/2011			✓	
Mixed Use	First Drafts	9/08/2011	✓	✓	✓	
	Second Drafts	24/08/2011			✓	
Community	First Drafts	9/08/2011	✓			
	Second Drafts	24/08/2011		✓	✓	
Environment	First Drafts	13/09/2011	✓	✓	✓	
	Second Drafts	00/10/2011				
Industry Low Impact Industry Study	Commence with low Impact study	00/05/2011	✓			
	Distribute draft study – internal comment	26/07/2011	✓			
	Finalise study	00/09/2011		✓	✓	
	Release draft study	15/09/2011				
Industry Zone Codes	First draft	9/08/2011	✓	✓		
	Incorporate freight summit outcomes Briefing to Council	14/09/2011	✓	✓		
Rural	First Drafts	26/07/2011	✓			
	Second Drafts	9/08/2011	✓			
Rural Township Zone	Rural and coastal communities audit					
	South of Pioneer	00/07/2011	✓			
	Pioneer Valley	00/08/2011	✓			
	North of Pioneer Briefing to Council	00/08/2011 24/08/2011	✓ ✓			
Expansion	First Drafts	09/08/2011	✓			
	Second Drafts	24/08/2011		✓		
Stage 8 Part 7 Local Plans	Ooralea Local Plan	Workshop	00/05/2010			
		Consultation	00/12/2010			
		Design guideline Briefing to Council	7/09/2011 14/09/2011		✓	
		Report to Council	00/10/2011			✓

Project Phase	Deliverables	Milestones	Aug	Sep	Oct	
Sarina Local Plan	Workshop	00/12/2010				
	Consultation	00/ 08/2010				
	Briefing to Council	10/02/2010				
	Report to Council	00/09/2011				
City Centre Local Plan	Workshop	25/03/2011				
	Consultation	00/06/2011				
	City Centre Strategy	00/ 09/2011	✓			
	Briefing to Council	21/09/2011		✓		
Mirani Local Plan	Release Draft Strategy	00/10/2011				
	Stakeholders Workshop					
	Briefing to Council	24/08/2011			✓	
	Consultation	2012			✓	
Northern Beaches Local Plan	Consider Submissions					
	Draft Local Plan	1/03/2012				
	Draft Local Plan	2012				
	Briefing to Council	10/10/2011				
Stage 9 Part 8 Overlays	Ports, Rural Heritage, Environment, Road Hierarchy, High Impact, Parks Hierarchy	First Drafts	9/08/2011		✓	✓
		Second Drafts	24/08/2011			✓
		Briefing to Council	26/10/2011			✓
	Flood Hazards	Pioneer flood study	00/07/2011			
		Internal consultation of draft document	21/07/2011			
		Internal meeting	7/09/2011			
		Briefing to Council (Flood studies)	00/09/2011	✓	✓	
		External consultation	00/09/2011		✓	✓
		Incorporate in flood study	00/09/2011			
		McCreadys Creek flood study	00/07/2011			
		Internal consultation of draft document	21/07/2011			
	Internal meeting	7/09/2011				
	Briefing to Council (Flood Studies)	00/09/2011	✓	✓		
	External consultation	00/09/2011		✓	✓	
Incorporate in flood overlay	00/03/2012					

Project Phase	Deliverables	Milestones	Aug	Sep	Oct
	Gooseponds flood study Incorporate current model in flood overlay Review based on Pioneer river study results	00/09/2011 00/11/2010 00/02/2012	✓	✓	
	Amend draft Flood Overlay maps	00/03/2012			
<b>Landslide Risk</b>	Discuss with Emergency Services meeting	11/08/2011		✓	
	Overlay maps + code	13/09/2011	✓	✓	✓
<b>Bushfire</b>	Discuss with Emergency Services meeting	11/08/2011	✓		
	Overlay maps + code	13/09/2011	✓	✓	✓
<b>Stage 10 Part 9</b> <b>Other Codes</b>	Draft Use Codes Final Use Codes	11/10/2011 25/10/2011	✓	✓	
<b>Stage 11 Schedule 1</b> <b>Definitions</b>	Insert relevant definitions	24/08/2011	✓	✓	
<b>Stage 12, 13, 14 &amp; 15</b> <b>Mapping</b>	Refer to mapping schedule				
<b>Schedule 2</b>	Briefing to Council – Major zone amendments Workshop	24/08/2011 11/10/2011	✓		✓
<b>Stage 16 Schedule 4</b> <b>Planning Scheme Policies</b>	<b>EDG</b>  Internal Meeting Each section to make own amendments Formatting  <b>CIA + TIA</b> Internal consultation Briefing to Council (Planning Scheme Policies)  Finalise Policy	00/07/2011 00/09/2011 00/10/2011  00/09/2011 00/10/2011 19/10/2011  00/12/2011	✓ ✓	✓ ✓	✓
<b>Stage 17 Appendix 1</b> <b>Index &amp; Glossary</b>	Briefing to Council (draft Planning Scheme)	16/11/2011			✓